



24TH ANNUAL

MAKIN' THE GRADE

BULL SALE



NOVEMBER 30TH, 2020
DLMS FARM GATE TIMED AUCTIONS

Friends and Fellow Cattlemen,

Welcome to our 24th Annual "Makin" the Grade Bull Sale. As you can see, our program has changed from selling yearling bulls in April to selling coming to two year old bulls in November. The spring of 2018, with so much snow and wind caused us to make big changes to the management of our cow herd and resulting calves.

We continue to breed and feature cattle that make a difference. I'm sure you get tired of hearing over and over the same story of each purebred breeder touting their cattle as the best. But, what does best really mean? Is it the best looking and then in whose eyes, is it the biggest, is it the most moderate and on and on it goes.

At Benchmark we focus on things that help pay the bills and if you have noticed the bills keep getting bigger and bigger. We do not just sell bulls, we buy your calves, we harvest them and we sell the meat. We are truly a pasture to plate outfit. Our bulls are designed so your calves will be born without help, will get up and grow, will gain and convert efficiently in the feedlot and when hung up they will yield and grade.

We are finishing up five years of owning our own harvesting facility. We not only talk the talk but we walk the walk, so much so that we have just started an expansion at the plant whereby we will double our capacity. We welcome you to become part of the exciting program known as Benchmark Beef. It has been a very exciting and rewarding five years to say the least.

If you take notice of our herd bulls, they are in the top 1% for weaning weight and yearling weight. The calves gain and grow and they rank very, very high for marbling resulting in the AAA and more importantly Prime carcasses that sure do help in paying the bills.

Our people are our mainstay. Dale and Laura and their family are coming on to their 20th year at Benchmark. Mike and Hailey are a delightful couple and Shawn is a get er done guy who never says no. We are blessed to have all of them as part of the team.

With the current pandemic crisis, we have decided for everyone's safety to run an on-line sale. The bulls will be available for viewing November 16th, so do pay us a visit. You can analyze the bulls, get answers to your questions and then bid and buy at your own home via DLMS.

We appreciate each and everyone of you and wish you safety and good health through all of this.

Sincerely,

Mike & Doug Munton

Mike 403-394-4903

Doug 403-328-6966

Shawn Smaglinski 403-795-0262



NOVEMBER 30TH, 2020

ONLINE SALE BY DLMS FARM GATE TIMED AUCTIONS

How this sale close works



RACEHORSE STYLE SALE WITH EXTENDED BIDDING.

First 30 min of Extended Bidding clock adds - 5 Minutes to close
Second 30 min of Extended Bidding clock adds - 3 Minutes to close
After an Hour of Extended Bidding clock adds - 1 Minute to close



ON OFFER

49 Black Angus Yearling Bulls

14 Red Angus Yearling Bulls

Sale Day Phones

Doug Munton (403) 328-6966

Mike Munton (403) 394-4903

Shawn Smaglinski (403) 795-0262

Mark Shologan (780) 699-5082

Cattle available at the ranch for viewing
November 16 through to sale day.



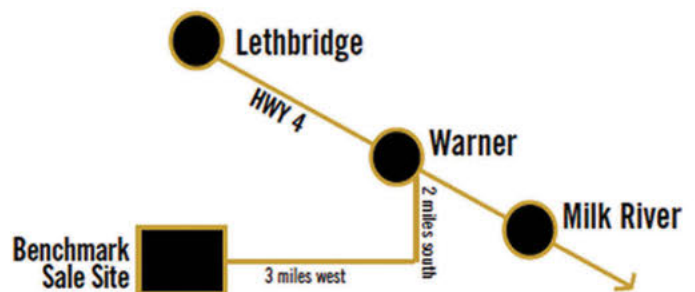
Timed Auctions Made Easy

POST SALE

Free feed until December 31, 2020

Feed at \$3 per day after year end.

Bulls left at the Ranch **MUST** be insured.



STAY CONNECTED

Doug and Mike Munton
Box 997, Lethbridge, AB T1J 4A2

Phone: (403) 328-6966

Cell: (403) 394-4903

Email: doug@muntonco.com

See Catalogue online at

www.benchmarkangus.com

MEET THE TEAM



MIKE AND HAILEY TRAINER



THE MUNTON FAMILY



SHAWN SMAGLINSKI



LINCOLN MICHAEL DOUGLAS MUNTON



DALE AND LAURA FEHR

OUR RANCH - OUR LEGACY

Enan Isaac Munton
Born January 2, 1879

Mary Anne Munton
Born August 18, 1886

Enan joined the army under-age serving in the 134th Battery Royal Horse & Field Artillery. Enan was a very good cricket player. After serving in the army he worked in the coal mines in Wales.

They immigrated to Canada in 1912 with Enan working in the mines and then for the city of Lethbridge in Galt Gardens as a gardener.

In about 1915 Enan was granted a homestead East of Champion and they built a shack and moved. Those were very hard times, mining coal all winter and breaking the land and building fences to retain the few cattle they were able to buy with their "coal money".

This homestead was the home of Stanley Munton. While on this homestead, Stanley, Doug and Ken developed East Champion Angus Ranch.



Stanley Warren Munton
Born May 16, 1927

Hilda Hilz
Born June 12, 1924

Stanley married Hilda Hilz on October 18, 1946. Hilda's parents gave them two cows as a wedding present which started them in the cattle business. Doug was born to Stan and Hilda July 29, 1947 and Ken on January 27, 1949. After working for a neighbor for the summer of 1960, Doug took his \$300 of earnings and with \$10 from his dad bought a Purebred Angus heifer from Alex Sera of Coalbridge Farms. This was the beginning of the Munton's endeavour into the Purebred Angus business, which continues to this day. Over the years the Munton's had great success breeding the likes of Ben's Big Boy 3'73 and Baros of Alcan Angus 40'73. Stan and Ken dispersed their cattle in 1989. Doug continued raising Angus cattle under the herd name Alcan Angus and now with his son Michael under the herd name Benchmark Angus. Sadly, we lost Dad (Stan) in July of 2010 and Mother (Hilda) in March of 2020.

B Benchmark
Angus 





FEED EFFICIENCY

I think we all know firsthand about feed efficiency. Some of us eat very little and still gain weight. Some of us wish we were inefficient such that we could eat whatever and how much we want and not gain weight. As with mankind, this principal applies clearly with our cattle. Some are efficient and some are not.

We often hear claims by producers that they have and produce efficient cattle. For the most part this is a statement made with no facts and proof behind it as they have not actually tested their cattle. How would one know? That is the dilemma we found ourselves in. We knew the weights on our cows, we knew the weights on our weaned calves and on our yearling cattle, but we had no idea on how to improve efficiency without individual testing of the animals. We run approximately 400 cows, we would like to run 440-450 cows on the same land base. We feed thousands of dollars of feed to our calves post-weaning, we want to decrease that cost by at least 10% and we want to have an improved environmental impact by decreasing methane and manure output.

By selecting for more feed efficient animals, we feel we can accomplish these goals. The goal as set by the National Beef Strategy is to be 15% more efficient within 5 years. We have a task set out for all of us. Improving the feed efficiency of your herd can result in big savings. 70 to 75 % of our total feed cost is used for maintenance of our cow herd. A 5% improvement in feed efficiency is considered to have an economic effect 4 times greater than a 5% improvement in average daily gain.

Residual Feed Intake (RFI) or net feed efficiency is defined as the difference between an animal's actual feed intake and its expected feed requirement for maintenance and growth. RFI is the variation in feed intake that remains after the requirements for maintenance and growth have been met. Efficient animals eat less than expected and have a negative or low RFI, while inefficient animals eat more than expected and have a positive or high RFI. Research has indicated that this trait is quite heritable at about 40% Dr. John Basarab and collaborating scientists from such countries as Australia, Ireland, Brazil and the US have concluded that selection for efficient RFI cattle will have no effect on growth, carcass yield and quality grade; will reduce feed intake at equal weight and ADG, will improve feed to gain ratio by 10-15%; will reduce net energy of maintenance and reduce the carbon footprint of cattle; and will reduce feed costs while having no effect on fertility of the cattle. A further explanation is given by Dr. John Genho of Neogen as follows:

Feed Efficiency EPDs

Feed Efficiency EPDs attempt to capture an animal's genetic ability to put on more weight with less feed. While there are many ways to calculate feed efficiency (such as feed conversion ratio and residual average daily gain), an especially useful way is residual feed intake or RFI. RFI is feed intake adjusted for an animal's weight and gain. An animal that eats more also tends to be larger and gain more weight. By adjusting these factors out of an animal's intake measurement, we are able to better understand which animals process feed more efficiently. We can then select for our typical growth traits (yearling weight, weaning weight, or post wean gain) and at the same time select for intake (in the form of RFI) and know that there is no double counting of an animal's size.

The RFI EPDs are expressed in actual lbs. of feed an animal will eat per day and is used in comparing one bull to another bull for the predictability of the RFI trait. Let's say we would expect bull X's calves to eat 0.65 lbs. more feed per day than the average calf his size, bull Y's to eat 0.35 lbs. less feed per day than the average calf his size, and bull Z's to eat 0.42 lbs. less feed than the average calf his size. Based on these numbers we would obviously choose bull Z as a sire.

Single trait selection is always a bad idea. RFI is no exception to this rule. Selection for RFI should always be done in conjunction with selection for growth. This selection for growth can be done by looking at weaning weight, yearling weight, or post wean gain EPDs. This will allow breeders to select animals that gain the most while consuming the least amount of feed.

This is cutting edge. You will not find this information in many Angus sale books in all of Canada. If you are serious about breeding economical, efficient, profitable cattle, I think you have to take a look. We have to get more efficient while yet producing a product the consumer is wanting and willing to pay for. We have provided from Grow Safe the RFI results for your consideration. The actual phenotypic results are the individuals' actual results on test. The RFI EPDs are a prediction of how the bulls' progeny will perform with respect to RFI and have been calculated by Dr. Genho.

EXPECTED PROGENY DIFFERENCES (EPDs)

Expected Progeny Differences (EPDs) are the most powerful genetic tool we have for selecting the best animals for your breeding program. EPDs are values that predict how the future progeny of an animal will perform relative to the progeny of other animals in the same breed.

EPDs:

- allow breeders to estimate a young animal's breeding value - that animal's value as a parent
- allow a fair comparison of breeding value by removing environmental bias such as climate, feed and special management
- the best tool available to compare animals between herds, countries and year of birth
- help breeders make informed decisions regarding breeding stock selection by evaluating numerous traits such as

#1 Growth Related Traits (WW, YW, CW, Milk, RADG, DMI, F:G)

WEANING WEIGHT (WW) Expressed in pounds, is a predictor of a sire's ability to transmit weaning growth to his progeny compared to other sires.

YEARLING WEIGHT (YW) Expressed in pounds, is a predictor of a sire's ability to transmit yearling growth to his progeny compared to other sires.

MILK Expressed in pounds, is a predictor of the milking ability in a sire's daughters, representing the difference in weaning weights of calves due to the amount of milk produced by their mothers.

CARCASS WEIGHT (CW) is expressed in pounds predicting the differences in the average carcass weight of sires progeny.

RESIDUAL AVERAGE DAILY GAIN (RADG) Expressed in pounds per day, is a predictor of a sire's genetic ability for post weaning gain in future progeny compared to that of other sires, given a constant amount of feed consumed.

DAY MATTER INTAKE (DMI) Expressed in pounds per day, is a predictor of difference transmitting ability for feed intake during post weaning phase, compared to that of other sires.

FEED TO GAIN (F:G) Is the amount of feed (dry matter) consumed to gain one pound of gain, expressed as a ratio. The average feed conversion ratio is 6.1 to 1. Feed costs are 65- 70% of all costs.

#2 Reproductive Related Traits (BW, CE, MCE, SC, HPG, Stay)

BIRTH WEIGHT (BW) expressed in pounds, is a predictor of a sire's ability to transmit birth weight to his progeny compared to other sires.

CALVING EASE (CE) the average difference in ease with which a sire's calves will be born when he is bred to first calf heifers, a higher number indicates a higher probability that his calves will be born unassisted.

MATERNAL CALVING EASE (MCE) Predicting the average calving ease with which a sire's first calf heifers will calve when compared to daughters of other sires.

SCROTAL CIRCUMFERENCE (SC) Expressed in cm, is a predictor of the difference in transmitting ability for scrotal size compared to other sires.

HEIFER PREGNANCY (HPG) is a predictor of the percent probability in a bull's daughter's ability to conceive and calve as two year olds.

STAYABILITY (Stay) is the percent probability of daughters staying in production to at least six year of age.

3 Carcass Related Traits (Fat , REA, % IMF)

To evaluate seed stock, use EPDs, pedigree and visual assessment. With EPDs, the concept of “intermediate optimums” works best.

Selection for one trait or for extremes generally results in unexpected consequences due to genetic correlations - for example, intense selection for high yearling weight will generally increase birth weight. Successful cattle breeding requires a thoughtful and balanced approach to optimize fertility, growth and carcass merit while improved profitability and efficiency. With all the data that comes with each bull, I’m sure at times it must be overwhelming. In order to use body composition EPDs of ultrasound data to their full potential, a breeder must have an understanding of the ultrasound terminology.

Several of the ultrasound measurements are comparable to the familiar carcass measurements. The data is simply collected on yearling bulls and heifers instead of market ready steers. Take a step back from looking at the numbers and become comfortable with the terminology.

RIB FAT: An external fat measurement taken between the 12th and 13th rib - the location a carcass would be split into quarters in the cooler reported in inches. Rib fat is the main factor in the USDA Yield Grade Equation.

RIBEYE AREA (REA): An area measurement of the longissimus dorsi, or ribeye muscle - reported in square inches. This image tends to be the most difficult to collect and requires the most highly skilled interpreting technician. Both the rib fat and ribeye area measurements are taken from the same image. The REA score is reported as sq. in. per 100lbs. of body weight.

RUMP FAT: An external fat measurement taken from an image collected between the hooks and the pins of the animal, reported in inches. The rump fat measurement coupled with the rib fat measurement, is used to determine more accurately the overall external body fat, enhancing the accuracy of predicting percent retail product (PRP). In most cases, an animal will exhibit more fat over the rump than the rib due to physiological process of “laying on fat.” Therefore, more variation is often displayed in the rump fat measurements of a contemporary group than the rib fat. This image is highly repeatable and is the least difficult to collect or interpret.

INTRAMUSCULAR FAT (%IMF): This measurement determines the amount of fat within the muscle (similar to marbling) and is reported in “%.” This measurement should be collected when cattle are maintaining a high level of nutrition. The field technician collects four images and the values generated by the interpreting software are averaged for an overall %IMF.

The Angus Associations, both AAA and CAA have adopted the CUP (Centralized Ultrasound Processing) Program for Ultrasounding Carcass Data and are using this information for formulating Carcass EPDs. This is the 21st year we have provided ultrasound measurements as taken by certified technicians. We feel it is very important that you, our valued customer, know what is under the hide as that really does determine value. It has been determined through many studies that carcass traits are highly heritable and that feeding has only marginal effect on the resulting carcass - genetics determine carcass quality!

SPRING 2020 ANGUS EPD AVERAGES FOR ALL CALVES BORN IN 2019

BLACK ANGUS									
CE	BW	WW	YW	RADG	DOC	CW	MARB	REA	FAT
+3.5	+2.1	+47	+83	+0.23	+15	+36	+0.38	+0.44	+0.015
RED ANGUS									
CE	BW	WW	YW	RADG	DOC	CW	MARB	REA	FAT
+2.5	+1.2	+35	+60	+0.19	+12	+22	+0.25	+0.35	+0.003



BENCHMARK[®] Beef

Benchmark Angus ventured into the beef business out of necessity in 2003. BSE had hit the cattle business and we had no market for the cattle we had proudly produced for generations. Mike started harvesting those cattle that we could not sell otherwise & marketing it to local restaurants & grocery stores.

Through many ups & downs things progressed and we developed a wonderful customer base that are very passionate about our very high quality beef product. In 2015, the opportunity came along to purchase a harvest facility in the heart of cattle feeding country; Picture Butte, AB. On January 1, 2016, we took over the day to day operations of Ben's Quality Meats and we have seen an explosion of the demand in Benchmark Premium Angus Beef.

Today when looking at a ranking for marbling on the 2019 born Black Angus Bulls, there are only 12 bulls with a Marbling EPD of +1.30 or higher. And of those 12 Bulls, 8 of them are born, bred and raised right here at Benchmark Angus. And keep in mind that the average Marbling EPD for Black Angus Cattle is +0.38; these bulls are more than three times the average. Wouldn't we all like a crop that is three times the average, here is your opportunity.

As we process "Benchmark[®] Beef", as well as commodity beef, the differences clearly come to light. And even in our earlier days, prior to having the predictability in our cattle, some made the grade and others did not. Now, the genetics in an animal tells the tale before the grading stamp goes on.

Our goal is to provide the genetics to our valued customers allowing them to be the most profitable in the business. We need more Benchmark[®] sired cattle to meet the demand. If you are using Benchmark[®] Bulls, we would like to visit about access to their calves and if not using Benchmark[®] Bulls we ask that you consider using them. Be sure your cattle measure up - use a Benchmark[®] Bull!"

Remember, "Pasture to Plate", it is not just an old cliché at Benchmark[®], we do it every day!

Doug Munton: (403)-328-6966
Michael Munton (403)-394-4903
Shawn Smaglinski (403)-795-0262

PARTNER SPOTLIGHT



Since opening Master Meats in 1976, their reputation for cutting fine, aged beef has grown well beyond the high end restaurants and is now considered Calgary's premiere butcher shop. Master Meats offers experienced butchers with a vast knowledge of beef, pork, poultry and seafood. This knowledge goes beyond the cutting board and into the kitchen. If you have a question about preparing a meat dish, don't hesitate to ask one of their professional butchers.

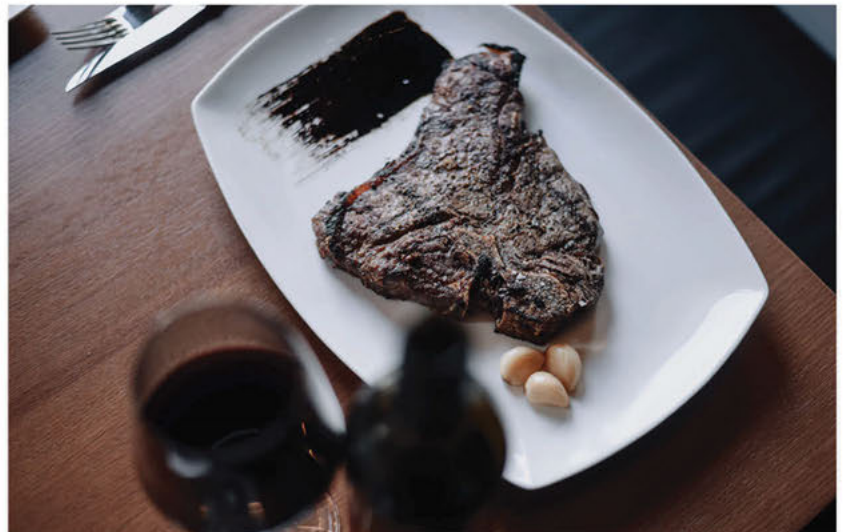


PARTNER SPOTLIGHT



"The pillar of Modern Steak from day one before it was even open was how do we take the beef experience to the next level. The key to that was visiting suppliers and visiting ranches, tasting hundreds of different types of beef. Then finding the great producers that were aligned with our philosophies. I'm so proud of our product and the fact we support 100% local Alberta beef because it's the right thing to do, and even more so it guarantees the best product on the plate. "

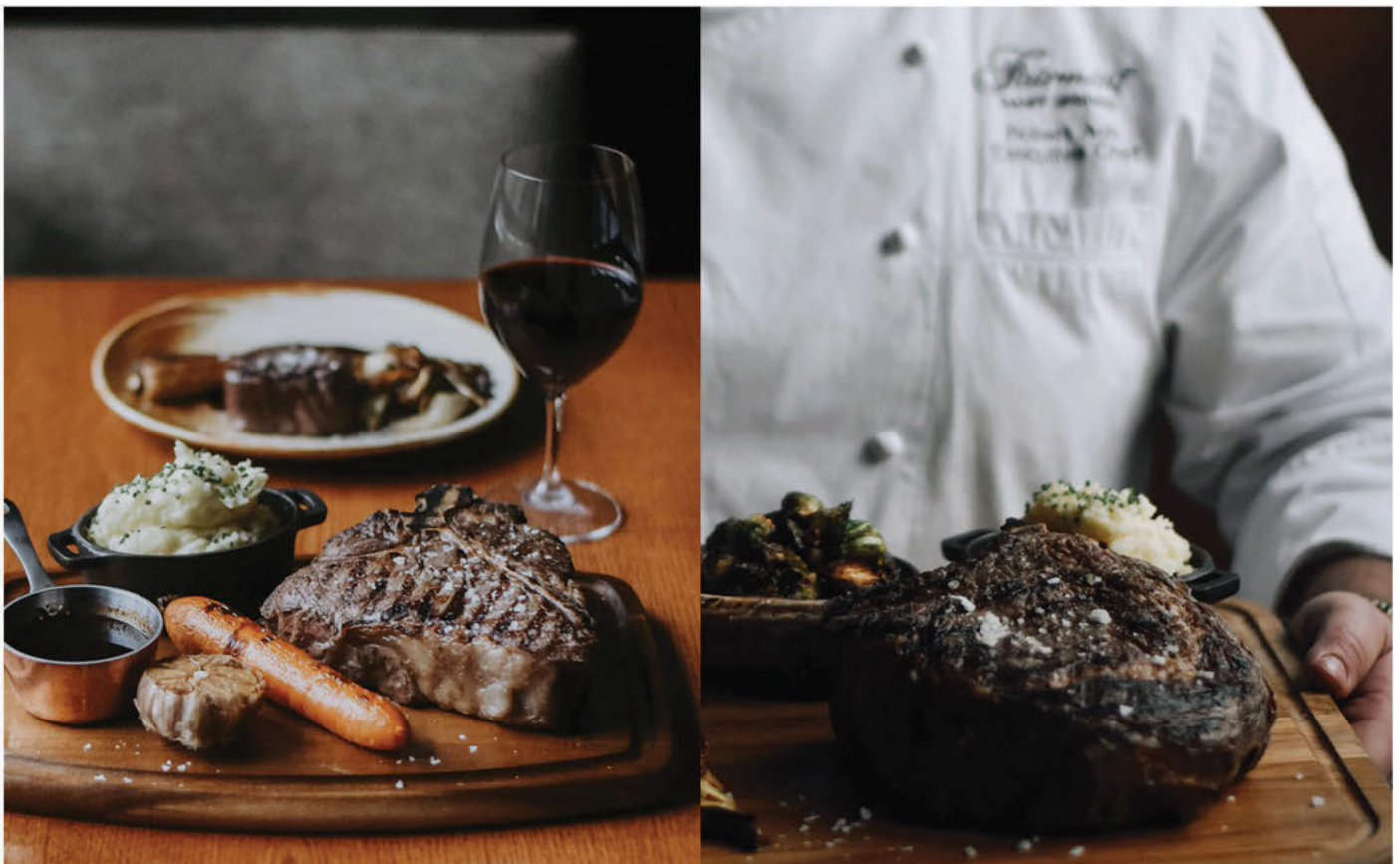
OWNER STEPHEN DEERE



PARTNER SPOTLIGHT

“The Munton family has been on the quest to produce the best tasting beef for nearly 100 years and utilizing Angus beef genetics for the proven tenderness and far superior taste that only Premium Angus Cattle can provide. Benchmark Farms also provide hormone-free beef. Our relationship with Benchmark goes deeper to be a partnership, of real passion between a rancher and a chef. Benchmark’s commitment is to consistently focus on creating the best marbled beef in Alberta, showcasing a high percentage of prime grading in 1888 Chophouse. The history and heritage the Fairmont Banff Springs holds in Canada drives us to provide only the finest products to serve to our guests. The Angus beef program that we do in house are full racks of tomahawk rib-eyes dry aged for 45 days and is then broken down by our skilled butchers in house. Our signature dish, the 50 oz Benchmark Black Angus Tomahawk Steak, is what inspired our butchery program. What we do not use in our restaurants we use showcasing our fresh house ground burger that can be found in many variations throughout the hotel.”

ROBERT ASH
EXECUTIVE CHEF





PARTNER SPOTLIGHT



Indulge your taste buds and spoil your senses with the flavours of Banff National Park. Banff Hospitality Collective's chefs and restaurants have cooked up exclusive menus, unique dishes, and irresistible specials in honour of the Taste for Adventure celebration.

REFERENCE SIRE

BENCHMARK TENDER BEEF 11'17



VALUE	\$W	\$F	\$G	\$B	\$C
INDEX	+90	+111	+88	+199	+319
RANKING	2%	5%	1%	1%	1%
PERF	AOD	BW	205D	365D	
	2	79	781	1282	

C R A BEXTOR 872 5205 608 1167526

Sire: G A R PROPHET 1694215

G A R OBJECTIVE 1885

G A R ANTICIPATION

Dam: BENCHMARK QUEEN 259'14

G A R IN SURE N1122 2145958

B A R EXT TRAVELER 205

CRA LADY JAYE 608 498 S EASY

S S OBJECTIVE T510 OT26 1F

G A R 1407 NEW DESIGN 2232

MCC DAYBREAK 1356843

GA R 5050 NEW DESIGN 0530

CONNEALY IN SURE 8524

G A R BEXTOR N48

GENOMIC
ENHANCED
CAA-EPDs

CE
+7

BW
+2.6

WW
+85

YW
+146

CW
+71

MARB
+1.21

REA
+1.06

FAT
-0.029

DOC
+31

• Tender Beef is the result of mating the great Pathfinder GAR Prophet to a very functional beautiful Anticipation daughter. At weaning as a two year old, she weighed 1414lbs with Tender Beef at her side weighing 812lbs. Talk about production. Tender Beef has perfect feet with great phenotype and numbers that are real hard to come by.

• His HD50K Genomic Ranking based on 816, 097 animals places him in the top 3% for marbling, top 4% for carcass weight, top 9% for ribeye and top 5% for tenderness thus his name. Very few Angus bulls can measure up to Tender Beef.

• OWNED WITH BASIN ANGUS RANCH

• 7 SONS SELL

- Avg. BW: 84 lbs
- Avg. 205D: 555 lbs.
- Avg. 365D: 1200 lbs

SEPTEMBER 2020 EPD RANKING:

Top 1% Carcass Weight	Top 1% REA
Top 1% Weaning Weight	Top 1% Fat
Top 1% Yearling Weight	Top 1% Docility
Top 1% Marbling	Top 1% Birth Weight
Top 1% Milk	Top 25% Calving Ease

BULLS SIRED BY BENCHMARK TENDER BEEF 11'17

LOT 1

BENCHMARK TENDER BEEF 1'19

Male LAA 1G March 27, 2019 2105439

C R A BEXTOR 872 5205 608 DMF AMF CAF OHF M1F NHF OSF DDF
 G A R PROPHET DMF DWF AMF CAF OHF M1F NHF OSF DDF
 G A R OBJECTIVE 1885 AMF NHF DDF
Sire: BENCHMARK TENDER BEEF 11'17
 G A R ANTICIPATION DWF AMF CAF OHF NHF DDF
 BENCHMARK QUEEN 259'14
 G A R IN SURE N1122 DDF

B/R FUTURE DIRECTION 4268 AMF CAF OHF NHF DDF
 WR JOURNEY-1X74 DMF DWF AMF CAF OHF M1F NHF OSF DDF
 2 BAR 5050 NEW DESIGN 7831
Dam: BENCHMARK BLACKCAP 2'17 (1957899)
 G A R BASELINE AB297 DDF
 BENCHMARK BLACKCAP 119'15
 BENCHMARK BLACKCAP 75'11

CARCASS	
EPD'S:	
MARB	+1.02
REA	+0.95
FAT	-0.027
CW	+58
ACTUAL:	
%IMF	+6.61
REA	+1.07
RIB FAT	+0.24
LMY	65.2%

LOT 2

BENCHMARK TENDER BEEF 18'19

Male BFL 18G April 12, 2019 2105621

C R A BEXTOR 872 5205 608 DMF AMF CAF OHF M1F NHF OSF DDF
 G A R PROPHET DMF DWF AMF CAF OHF M1F NHF OSF DDF
 G A R OBJECTIVE 1885 AMF NHF DDF
Sire: BENCHMARK TENDER BEEF 11'17
 G A R ANTICIPATION DWF AMF CAF OHF NHF DDF
 BENCHMARK QUEEN 259'14
 G A R IN SURE N1122 DDF

G A R NEW DESIGN 5050 DMF AMF CAF OHF M1F NHF OSF DDC
 G A R BASELINE AB297 DDF
 G A R OBJECTIVE 648S AMF
Dam: BENCHMARK ROSEBUD 25'17 (1957883)
 MYTTY IN FOCUS DMF DWF AMF CAF OHF M1F NHF OSF DDF
 BENCHMARK ROSEBUD 6291 AMF
 WILLABAR ROSEBUD 45P NHF

CARCASS	
EPD'S:	
MARB	+1.50
REA	+0.90
FAT	+0.003
CW	+57
ACTUAL:	
%IMF	+8.91
REA	+1.17
RIB FAT	+0.51
LMY	58%

PERFORMANCE							EPD's				
AOD	BW	205D	365D	ADG	F:G	RFI	BW	WW	YW	RADG	RFI
2	84	594	1321	4.76	5.22:1	0.04	2.2	75	132	0.27	0.1323

PERFORMANCE							EPD's				
AOD	BW	205D	365D	ADG	F:G	RFI	BW	WW	YW	RADG	RFI
2	70	583	1258	4.03	5.69:1	-0.64	0.06	68	116	0.24	0.2205

SEPTEMBER 2020 EPD RANKING:		
Top 1% Milk	Top 4% Yearling Weight	Top 9% Carcass Weight
Top 3% Marbling	Top 5% Weaning Weight	Top 10% Residual ADG
Top 4% Fat	Top 5% Ribeye	

SEPTEMBER 2020 EPD RANKING:		
Top 1% Marbling	Top 1% Maternal Calving Ease	Top 4% Yearling Weight
Top 1% Ribeye	Top 3% Calving Ease	Top 4% Carcass Weight
Top 1% Milk	Top 3% Weaning Weight	

• From a real nice Journey two year old.

• From a two year old by Baseline. This guy was our highest scanning bull for marbling at 8.91. He was with a dozen heifers after AI.



LOT 2

M
&
K

HOME
SALES

CELEBRATING
OVER
60
YEARS
Est. 1958

A Name You Can Trust

Providing Quality Modular and
Ready to Move Housing for Alberta
Since 1958

1-800-334-7059

2930 Fairway Street South Lethbridge, Alberta
www.mandkhomesales.com

Co-operative Limited

PO Box 657
Picture Butte, Alberta T0K 1V0
UFA.com

DON & COLLEEN SHIMEK

Agents
Shimek Services Ltd

DIRECT 403-732-4224
CELL 403-308-1322
1-877-732-4343
RESIDENCE 403-732-4658

BULLS Sired BY BENCHMARK TENDER BEEF 11'17

LOT 3 BENCHMARK TENDER BEEF 25'19

Male LAA 25G April 15, 2019 2105443

C R A BEXTOR 872 5205 608 DMF AMF CAF OHF M1F NHF OSF
 G A R PROPHET DMF DWF AMF CAF OHF M1F NHF OSF DDF
 G A R OBJECTIVE 1885 AMF NHF DDF
Sire: BENCHMARK TENDER BEEF 11'17
 G A R ANTICIPATION DWF AMF CAF OHF NHF DDF
 BENCHMARK QUEEN 259'14
 G A R IN SURE N1122 DDF

B/R DESTINATION 727-928 DMF AMF CAF OHF M1F NHF OSF DDF
 G A R END POINT 5122 DDF
 G A R 28 AMBUSH 1949 DDF
Dam: BENCHMARK PRIDE 100'17 (1964778)
 G A R DAYBREAK 6860 DDC
 BENCHMARK PRIDE 80'14
 BENCHMARK PRIDE 86'12

CARCASS	
EPD'S:	
MARB	+0.92
REA	+0.69
FAT	+0.003
CW	+42
ACTUAL:	
%IMF	+4.20
REA	+1.30
RIB FAT	+0.25
LMY	64%

LOT 4 BENCHMARK TENDER BEEF 43'19

Male BFL 43G April 23, 2019 2105633

C R A BEXTOR 872 5205 608 DMF AMF CAF OHF M1F NHF OSF
 G A R PROPHET DMF DWF AMF CAF OHF M1F NHF OSF DDF
 G A R OBJECTIVE 1885 AMF NHF DDF
Sire: BENCHMARK TENDER BEEF 11'17
 G A R ANTICIPATION DWF AMF CAF OHF NHF DDF
 BENCHMARK QUEEN 259'14
 G A R IN SURE N1122 DDF

TC ABERDEEN 759 DMF AMF CAF OHF M1F NHF OSF DDF
 BENCHMARK ABERDEEN 188'12
 G A R T510 TRAVELER 264 AMF
Dam: BENCHMARK ESTER 128'16 DDF (1899376)
 GAR INGENUITY J2024 DDC
 BENCHMARK ESTER 162'14
 BENCHMARK ESTER 47'11

CARCASS	
EPD'S:	
MARB	+0.75
REA	+0.85
FAT	-0.025
CW	+52
ACTUAL:	
%IMF	+4.16
REA	+1.20
RIB FAT	+0.29
LMY	63%

PERFORMANCE							EPD's				
AOD	BW	205D	365D	ADG	F:G	RFI	BW	WW	YW	RADG	RFI
2	90	542	1057	3.20	6.63:1	0.95	2.5	60	102	0.22	0.3527

SEPTEMBER 2020 EPD RANKING:					
Top 2% Marbling	Top 10% Weaning Weight	Top 15% Yearling Weight			
Top 10% Ribeye	Top 10% Maternal Calving Ease	Top 15% Milk			

From another two year old heifer, she by End Point.

PERFORMANCE							EPD's				
AOD	BW	205D	365D	ADG	F:G	RFI	BW	WW	YW	RADG	RFI
3	87	549	1180	4.08	5.45:1	-0.22	2.3	67	116	0.25	0.1764

SEPTEMBER 2020 EPD RANKING:					
Top 1% Milk	Top 3% Weaning Weight	Top 9% Carcass Weight			
Top 2% Ribeye	Top 4% Yearling Weight				
Top 2% Fat	Top 6% Marbling				

The dam by the CJD herdsire has a son at Heibert Ranches. Richard uses Benchmark bulls and receives the premium on his yearlings and calves and the grading on those cattle are amazing.
 Actually just harvested a load of 42 steers from Richard with 50% grading PRIME!!!

LOT 5 BENCHMARK TENDER BEEF 105'19

Male POKE 105G May 09, 2019 2105437

C R A BEXTOR 872 5205 608 DMF AMF CAF OHF M1F NHF OSF
 G A R PROPHET DMF DWF AMF CAF OHF M1F NHF OSF DDF
 G A R OBJECTIVE 1885 AMF NHF DDF
Sire: BENCHMARK TENDER BEEF 11'17
 G A R ANTICIPATION DWF AMF CAF OHF NHF DDF
 BENCHMARK QUEEN 259'14
 G A R IN SURE N1122 DDF

BR MIDLAND DMF AMF CAF OHF M1F NHF OSF DDF
 BENCHMARK MIDLAND 753 AMF DDF
 PF 104 RUTH 3131
Dam: BENCHMARK BLACK LASS 95'15 (1837084)
 S S TRAVELER 6807 T510 DMF AMF CAF OHF M1F NHF DDF
 BENCHMARK BLACK LASS 9121 NHF
 BENCHMARK BLACK LASS 70080 AMF

CARCASS	
EPD'S:	
MARB	+0.63
REA	+0.90
FAT	-0.028
CW	+54
ACTUAL:	
%IMF	+3.57
REA	+1.17
RIB FAT	+0.29
LMY	63.4%

PERFORMANCE							EPD's				
AOD	BW	205D	365D	ADG	F:G	RFI	BW	WW	YW	RADG	RFI
4	86	572	1339	5.16	4.66:1	-0.66	+2.2	63	119	0.27	0.2205

SEPTEMBER 2020 EPD RANKING:					
Top 1% Ribeye	Top 4% Maternal Calving Ease	Top 10% Calving Ease			
Top 1% Fat	Top 7% Carcass Weight	Top 10% Milk			
Top 3% Yearling Weight	Top 8% Weaning Weight	Top 10% Marbling			
		Top 10% Residual ADG			

Here is a bull that checks all the boxes, from calving ease, growth and gain, carcass qualities second to none and keep his daughters, they will milk.

**Where Country In The City Makes
For Great Family Shopping**



We have been serving the fashion, workwear and horse needs of Lethbridge and area for over 25 years - stop by, be greeted with a smile and find out why our customers keep coming back!

WESTERN STOCKMAN

915 43rd Street South
Lethbridge, AB
403-327-0731




P
R
O
C
O
R
R
A
L



403-892-2397

procorralcleaners.com

C
L
E
A
N
E
R
S

BULLS SIRED BY BENCHMARK TENDER BEEF 11'17

LOT 6 BENCHMARK TENDER BEEF 119'19

Male BFL 119G May 14, 2019

C R A BEXTOR 872 5205 608 DMF AMF CAF OHF M1F NHF OSF
 G A R PROPHET DMF DWF AMF CAF OHF M1F NHF OSF DDF
 G A R OBJECTIVE 1885 AMF NHF DDF
Sire: BENCHMARK TENDER BEEF 11'17
 G A R ANTICIPATION DWF AMF CAF OHF NHF DDF
 BENCHMARK QUEEN 259'14
 G A R IN SURE N1122 DDF

C F RIGHT DESIGN 1802 DWF AMF CAF OHF DDC
 SUMMITCREST COMPLETE 1P55 DWF AMF CAF OHF NHF DDF
 SUMMITCREST ELBA 1M17
Dam: G A R COMPLETE 1381 (1723491)
 G A R PREDESTINED DMF AMF CAF OHF M1F NHF OSF DDC
 G A R PREDESTINED 2358 NHF DDF
 G A R OBJECTIVE 2345 AMF NHF DDC

CARCASS	
EPD'S:	
MARB	+1.53
REA	+0.34
FAT	+0.016
CW	+22
ACTUAL:	
%IMF	+7.86
REA	+1.14
RIB FAT	+0.36
LMY	59.2%

LOT 7 BENCHMARK TENDER BEEF 153'19

Male LAA 153G June 09, 2019 2105454

C R A BEXTOR 872 5205 608 DMF AMF CAF OHF M1F NHF OSF
 G A R PROPHET DMF DWF AMF CAF OHF M1F NHF OSF DDF
 G A R OBJECTIVE 1885 AMF NHF DDF
Sire: BENCHMARK TENDER BEEF 11'17
 G A R ANTICIPATION DWF AMF CAF OHF NHF DDF
 BENCHMARK QUEEN 259'14
 G A R IN SURE N1122 DDF

S S OBJECTIVE T510 OT26 DMF AMF CAF OHF M1F NHF OSF DDF
 G A R EFFICIENCY 7295 DMF AMF CAF OHF M1F NHF DDF
 G A R ENHAVER G113 NHF
Dam: BENCHMARK LAVENDER LADY 959 (1499454)
 PF E161 PRECISION 2188
 BENCHMARK LAVENDER LADY 6176
 LAVENDER LADY ALCAN 206

CARCASS	
EPD'S:	
MARB	+0.82
REA	+0.50
FAT	-0.007
CW	+48
ACTUAL:	
%IMF	+4.27
REA	+1.04
RIB FAT	+0.20
LMY	61.5%

PERFORMANCE								EPD's				
AOD	BW	205D	365D	ADG	F:G	RFI		BW	WW	YW	RADG	RFI
8	76	475	1085	3.70	5.82:1	+0.37		+2.2	75	132	0.27	0.1323

SEPTEMBER 2020 EPD RANKING:		
Top 1% Marbling	Top 1% Milk	Top 10% Calving Ease
Top 1% Maternal Calving Ease	Top 5% Docility	

PERFORMANCE								EPD's				
AOD	BW	205D	365D	ADG	F:G	RFI		BW	WW	YW	RADG	RFI
10	95	573	1157	3.65	N/A	N/A		+3.7	69	116	+0.23	N/A

SEPTEMBER 2020 EPD RANKING:		
Top 2% Weaning Weight	Top 9% Docility	Top 15% Milk
Top 4% Yearling Weight	Top 10% Fat	
Top 4% Marbling	Top 15% Carcass Weight	

• 119'19 lost his mother when very young. She is the dam of Micah at Artisan Farms in Ontario, dam of Premium at Christian Brosts in Saskatchewan and dam of a Baseline son at Snake Valley plus she has a very productive daughter in production. She will be missed. Take this bull home and retain every daughter.

• From an Elite Dam having a weaning ratio of 106 on her calves. She has sons at Schmids, Rosetown Farming, Walburger and Blood Band Ranch with two daughters seeing service at Benchmark.



LOT 6



LOT 7
SIRE OF DAM

REFERENCE SIRE

G A R VELOCITY W507



GENOMIC
ENHANCED
CAA-EPDs

VALUE	\$W	\$F	\$G	\$B	\$C
INDEX	+71	+113	+92	+206	+325
RANKING	20%	4%	1%	1%	1%
PERF	AOD	BW	205D	365D	
	ET	73	706	1138	

G A R MOMENTUM

Sire: BRIDGES VELOCITY

BRIDGES DAYBREAK 2100

S S OBJECTIVE T510 OT26 1179389

Dam: G A R OBJECTIVE A706

G A R INTEGRITY T465

G A R PROGRESS

G A R BIG EYE 1770

MCC DAYBREAK 1356843

BRIDGES 5050 NEW DESIGN 9108

S S TRAVELER 6807 T510 1033829

S S MISS RITA R011 7R8

G A R INTEGRITY

G A R PRECISION 81

CE
+13

BW
+1.2

WW
+64

YW
+123

CW
+65

MARB
+1.20

REA
+1.42

FAT
-0.042

DOC
+20

RADG
+0.28

• Velocity was our pick of the bulls at the April 2018 Gardiner Sale. He has more than ample growth and his carcass attributes are hard to beat. We used him on a group of heifers after AI'ing and only ended up with four calves in 2019.

• For 2020 there will be 39 calves to evaluate and he saw a good group of cows this year. The dam A706 is non other than the granddam of 100X a calving ease stalwart for Select Sires.

• He scanned at 9.65% IMF with a 15.3 sq inch ribeye with only 0.21 inch of rib fat

• OWNED WITH GARDNER ANGUS & ROCKING W ANGUS

• 2 SONS SELL

- Avg. BW: 71 lbs.
- Avg. 205D: 586 lbs.
- Avg. 365D: 1308 lbs

SEPTEMBER 2020 EPD RANKING:

Top 1% Marbling	Top 3% Milk
Top 1% Ribeye	Top 6% Weaning Weight
Top 1% Fat	Top 8% Maternal Calving Ease
Top 1% Carcass Weight	Top 9% RADG
Top 2% Yearling Weight	Top 10% Heifer Pregnancy
Top 2% Calving Ease	

BULLS SIRED BY G A R VELOCITY W507

LOT 8 BENCHMARK VELOCITY 29'19 Male BFL 29G April 15, 2019

2105626

G A R MOMENTUM DMF AMF CAF OHF NHF DDF
BRIDGES VELOCITY DMF DMF AMF CAF OHF M1F NHF OSF DDF
BRIDGES DAYBREAK 2100 DDF
Sire: **G A R VELOCITY W507 (2024584)**
S S OBJECTIVE T510 OT26 DMF AMF CAF OHF M1F NHF OSF DDF
G A R OBJECTIVE A706 NHF DDF
G A R INTEGRITY T465 NHC

G A R PROPHET DMF DMF AMF CAF OHF M1F NHF OSF DDF
BENCHMARKPROPHET 69'15
BENCHMARK PRIDE 130'13 DDF
Dam: **BENCHMARK LUCY 48'17 DDF (1964396)**
G A R NEW DESIGN 5050 DMF AMF CAF OHF M1F NHF OSF DDC
BENCHMARK LUCY 9'12
BENCHMARK LUCY 0131

CARCASS	
EPD'S:	
MARB	+1.42
REA	+1.02
FAT	+0.003
CW	+43
ACTUAL:	
%IMF	+8.66
REA	+1.21
RIB FAT	+0.33
LMY	63.1%

LOT 9 BENCHMARK VELOCITY 108'19 Male BFL 108G May 11, 2019

2105641

G A R MOMENTUM DMF AMF CAF OHF NHF DDF
BRIDGES VELOCITY DMF DMF AMF CAF OHF M1F NHF OSF DDF
BRIDGES DAYBREAK 2100 DDF
Sire: **G A R VELOCITY W507 (2024584)**
S S OBJECTIVE T510 OT26 DMF AMF CAF OHF M1F NHF OSF DDF
G A R OBJECTIVE A706 NHF DDF
G A R INTEGRITY T465 NHC

B/R FUTURE DIRECTION 4268 AMF CAF OHF NHF DDF
WR JOURNEY-1X74 DMF DMF AMF CAF OHF M1F NHF OSF DDF
2 BAR 5050 NEW DESIGN 7831
Dam: **BENCHMARK QUEEN 13'17 (1957871)**
BENCHMARK PROPHET 155'13
BENCHMARK QUEEN 168'15
G A R T510 TRAVELER 264 AMF

CARCASS	
EPD'S:	
MARB	+0.77
REA	+0.93
FAT	-0.023
CW	+54
ACTUAL:	
%IMF	+4.34
REA	+1.08
RIB FAT	+0.32
LMY	61.1%

PERFORMANCE							EPD's				
AOD	BW	205D	365D	ADG	F:G	RFI	BW	WW	YW	RADG	RFI
2	71	621	1315	4.81	5.39:1	+1.74	-1.9	54	97	+0.18	0.0571

SEPTEMBER 2020 EPD RANKING:		
Top 1% Marbling	Top 1% Birth Weight	Top 1% Calving Ease
Top 1% Ribeye	Top 1% Maternal Calving Ease	

PERFORMANCE							EPD's				
AOD	BW	205D	365D	ADG	F:G	RFI	BW	WW	YW	RADG	RFI
2	70	552	1301	4.92	4.91:1	+0.93	-0.8	55	108	+0.26	+0.3086

SEPTEMBER 2020 EPD RANKING:		
Top 1% Calving Ease	Top 4% Maternal Calving Ease	Top 7% Carcass Weight
Top 1% Ribeye	Top 5% Birth Weight	Top 10% Yearling Weight
Top 3% Fat	Top 6% Marbling	

• A bull we really like. He was born with very moderate birth weight and then sure did grow and gain a heifer bull for sure.

• From a two year old Journey daughter. These Journey daughters are moderate and efficient. Again a heifer bull that gained on test near 5lbs per day and converted at less than 5 to 1.



LOT 8



LOT 9

REFERENCE SIRE

EF PRIME QUARTER 5369



GENOMIC
ENHANCED
CAA-EPDs

VALUE	\$W	\$F	\$G	\$B	\$C
INDEX	+86	+72	+10	+139	+272
RANKING	3%	%	10%	10%	35%
PERF	AOD	BW	205D	365D	
	2	72	738	1266	

CONNEALY CONSENSUS 7229
Sire: V A R GENERATION 2100
 SANDPOINT BLACKBIRD 8809
 G A R PROPHET
Dam: EF RITA 3422
 EF RITA 7328

CONNEALY CONSENSUS
 BLUE LILLY OF CONANGA 16
 CONNEALY ONWARD
 RIVERBEND BLACKBIRD 430
 C R A BEXTOR
 G A R OBJECTIVE 1885
 G A R PREDESTINED
 A PLUS RITA 5H11 8009

CE
+15
 BW
+1.1
 WW
+82
 YW
+143

• We purchased Prime Quarter on the recommendation of Myles Immerker of Semex at the time. We liked the added growth & gain of the bull while maintaining the carcass attributes so necessary to our business. Generation 2100 is maternal brother to the \$730,000 Power Play, Reserve, Index, Commander, Foreman, Rubicon, Rancher & others. Sandpoint Blackbird 8809 is known as the dam of herd sires and has generated over \$7.5 million of progeny for Vintage Angus Ranch. We expect great things of Prime Quarter & value your evaluation on the sons in this sale.

• CO-OWNED WITH SEMEX ALLIANCE & EVANS FARMS

8 SONS SELL

- Avg. BW: 90 lbs.
- Avg. 205D: 596 lbs.
- Avg. 365D: 1323 lbs

SEPTEMBER 2020 EPD RANKING:

Top 1% Calving Ease	Top 1% Maternal Calving Ease
Top 1% Weaning Weight	Top 6% Heifer Pregnancy
Top 1% Yearling Weight	Top 7% Docility
Top 1% Marbling	

CW
+44
 MARB
+1.07
 REA
+0.49
 FAT
+0.048
 DOC
+25

BULLS SIRED BY EF PRIME QUARTER 5369

LOT 10 BENCHMARK PRIME QUARTER 41'19

Male BFL 41G April 23, 2019 2106053

CONNEALY CONSENSUS 7229 DMF DWF AMF CAF OHF M1F NHF V A R GENERATION 2100 DMF DWF AMF CAF OHF M1F NHF OSF SANDPOINT BLACKBIRD 8809 AMF
Sire: EF PRIME QUARTER 5369
 G A R PROPHET DMF DWF AMF CAF OHF M1F NHF OSF DDF
 EF RITA 3422 DDF
 EF RITA 7328

G A R NEW DESIGN 5050 DMF AMF CAF OHF M1F NHF OSF DDC
 G A R BASELINE AB297 DDF
 G A R OBJECTIVE 648S AMF
Dam: BENCHMARK ELBA 17'15 (1834813)
 WOODHILL FORESIGHT DMF AMF CAF OHF M1F NHF OSF DDF
 BENCHMARK ELBA 810
 BALE 361Z AMBUSH 63E

CARCASS	
EPD'S:	
MARB	+0.85
REA	+0.43
FAT	+0.045
CW	+34
ACTUAL:	
%IMF	+6.01
REA	+1.00
RIB FAT	+0.44
LMY	57.8%

LOT 11 BENCHMARK PRIME QUARTER 57'19

Male BFL 57G April 27, 2019 2157829

CONNEALY CONSENSUS 7229 DMF DWF AMF CAF OHF M1F NHF V A R GENERATION 2100 DMF DWF AMF CAF OHF M1F NHF OSF SANDPOINT BLACKBIRD 8809 AMF
Sire: EF PRIME QUARTER 5369
 G A R PROPHET DMF DWF AMF CAF OHF M1F NHF OSF DDF
 EF RITA 3422 DDF
 EF RITA 7328

MYTTY IN FOCUS DMF DWF AMF CAF OHF M1F NHF OSF DDF
 CONNEALY IN SURE 8524 DWF AMF CAF M1F NHF OSF DDF
 ENTREENA OF CONANGA 657 DDF
Dam: G A R IN SURE N1122 DDF (2145958)
 C R A BEXTOR 872 5205 608 DMF AMF CAF OHF M1F NHF OSF DDF
 G A R BEXTOR N48 NHF
 G A R 1407 NEW DESIGN 3294

CARCASS	
EPD'S:	
MARB	+1.11
REA	+0.66
FAT	+0.01
CW	+47
ACTUAL:	
%IMF	+5.22
REA	+1.16
RIB FAT	+0.52
LMY	

PERFORMANCE							EPD's				
AOD	BW	205D	365D	ADG	F:G	RFI	BW	WW	YW	RADG	RFI
4	81	589	1259	4.54	4.97:1	-1.46	-0.5	63	111	+0.22	-0.0220

SEPTEMBER 2020 EPD RANKING:		
Top 1% Calving Ease	Top 7% Birth Weight	Top 8% Yearling Weight
Top 4% Marbling	Top 8% Weaning Weight	Top 8% Maternal Calving Ease

* A low birth weight bull that gained 41/2 lbs per day on test and converted at less than 5 to 1. A maternal brother sold to Anchor Bar Ltd. in sale XVIII.

PERFORMANCE							EPD's				
AOD	BW	205D	365D	ADG	F:G	RFI	BW	WW	YW	RADG	RFI
2	98	628	1460	5.86	4.56:1	-0.22	+2.8	78	143	+0.25	+0.1984

SEPTEMBER 2020 EPD RANKING:		
Top 1% Marbling	Top 3% Calving Ease	Top 7% Docility
Top 1% Yearling Weight	Top 4% Milk	Top 10% Ribeye
Top 1% Weaning Weight	Top 6% Heifer Pregnancy	Top 10% Maternal Calving Ease

* Lot 11 is a very well bred performance bull. He had a 111 weaning ratio & a 122 yearling ratio. He scanned at 5.22% IMF and had a 16.6 sq in ribeye. Note that his mother is the granddam of Tender Beef.



OLS TUBS

This protein, energy, concentrated vitamin and mineral package is designed for use on growing and mature beef cattle being fed grass hay dry grass, pasture, or for mature beef cattle on very poor quality roughage. Contains extra AMAFERM, which is proven to be an effective replacement for 3 pounds of pellets or grain. Also includes BIO-MOS to aid in the building of the immune system. BIO-MOS has been proven effective on E-coli and Salmonella, where pharmaceuticals have failed.

- FCI approved, no ractopamine use protein products.
- Complete well balanced vitamin and mineral program. Formulations to fit all phases of production livestock.
- Enhanced roughage utilization through Anafarm. Animals will have a better fill, visibly less pellets seen in the manure (10 days to 2 weeks).
- Substantial roughage savings: 15-30% on hay and up to 50% on corn stalks.

TESTIMONIALS AVAILABLE

IN STOCK

- OLS #9 CA Bovine Breeder - Most Concentrated All-Around Tub
- OLS #10 Bovine Breeder Bio - Most Concentrated All-Around Tub
- OLS #14 CA Bovine Breeder D - Most Concentrated Tub with added D.E.
- OLS #20 CA Performance Bull - Special Tub for Backgrounding Young Bulls with added Bio Mos, D.E., Oxygen, & Seisler.

SPECIAL ORDER AVAILABLE

Layne Cook
OLS Dealer

Ph: 403-853-3254
Cell: 403-333-0563
Email: dcoffe@telusnet

Box 2292
Cardston, AB
T0K 0K0

Simply the Best!

STOCKMENS INSURANCE

LLOYD'S CORRESPONDENT

210 - 3502 Taylor Street East
Saskatoon, SK
S7H 5H9
PH: 306/931-0088
FAX: 306/931-8782

YOUR LIVESTOCK INSURANCE SPECIALIST

BULLS SIRED BY EF PRIME QUARTER 5369

LOT 12 BENCHMARK PRIME QUARTER 71'19

Male LAA 71G May 04, 2019 2105448

CONNELY CONSENSUS 7229 DMF DWF AMF CAF OHF M1F NHF
V A R GENERATION 2100 DMF DWF AMF CAF OHF M1F NHF OSF DDF
SANDPOINT BLACKBIRD 8809 AMF

Sire: **EF PRIME QUARTER 5369**
G A R PROPHET DMF DWF AMF CAF OHF M1F NHF OSF DDF
EF RITA 3422 DDF
EF RITA 7328

SITZ UPWARD 307R DMF DWF AMF CAF M1F NHF OSF DDF
TRIARA MADE TO ORDER 366Y AMF
RBF RITA 6A98 4TV7 2A63 AMF

Dam: **BENCHMARK LAVENDER LADY 20'14 (1779919)**
STANDARD HILL PAYOFF 20P AMF NHF
BENCHMARK LAVENDER LADY 851
BENCHMARK LAVENDER LADY 5160

CARCASS	
EPD'S:	
MARB	+0.48
REA	+0.36
FAT	+0.036
CW	+37
ACTUAL:	
%IMF	+3.02
REA	+0.97
RIB FAT	+0.46
LMY	57.3%

LOT 13 BENCHMARK PRIME QUARTER 82'19

Male BFL 82G May 05, 2019 2106070

CONNELY CONSENSUS 7229 DMF DWF AMF CAF OHF M1F NHF
V A R GENERATION 2100 DMF DWF AMF CAF OHF M1F NHF OSF DDF
SANDPOINT BLACKBIRD 8809 AMF

Sire: **EF PRIME QUARTER 5369**
G A R PROPHET DMF DWF AMF CAF OHF M1F NHF OSF DDF
EF RITA 3422 DDF
EF RITA 7328

MCC DAYBREAK DMF AMF CAF OHF M1F NHF OSF DDF
G A R DAYBREAK 6860 DDC
G A R OBJECTIVE 277L AMF DDC

Dam: **BENCHMARK BLACKBIRD 93'14 DDF (1779809)**
BENCHMARK NEXT STEP 8289
BENCHMARK BLACKBIRD 99'12
BENCHMARK BLACKBIRD 091

CARCASS	
EPD'S:	
MARB	+1.10
REA	+0.46
FAT	+0.017
CW	+41
ACTUAL:	
%IMF	+7.24
REA	+1.05
RIB FAT	+0.40
LMY	59.2%

PERFORMANCE							EPD's				
AOD	BW	205D	365D	ADG	F:G	RFI	BW	WW	YW	RADG	RFI
5	91	512	1282	5.05	5.05:1	+1.17	+1.8	60	115	+0.22	+0.3527

SEPTEMBER 2020 EPD RANKING:	
Top 1% Maternal Calving Ease	Top 5% Calving Ease
Top 5% Yearling Weight	Top 10% Weaning Weight

• Made to Order daughter who has a son at Black Coulee. This guy gained over 5 lbs per day on test and converted at 5 to 1. Now that is Performance!



LOT 12

PERFORMANCE							EPD's				
AOD	BW	205D	365D	ADG	F:G	RFI	BW	WW	YW	RADG	RFI
5	80	559	1211	4.43	5:1	-1.01	+0.6	71	119	+0.23	+0.0441

SEPTEMBER 2020 EPD RANKING:		
Top 1% Weaning Weight	Top 3% Yearling Weight	Top 4% Maternal Calving Ease
Top 1% Marbling	Top 3% Calving Ease	

• This guy had a weaning ratio of 101 and a IMF ratio of 133. He will give you moderate birth weight calves that grow & gain with end product carcasses that will grade. Missing out on that Prime Carcass premium? The dam has a son at Skierkas. Buy them for what they will produce.

LOT 14 BENCHMARK PRIME QUARTER 83'19

Male BFL 83G May 05, 2019 2106069

CONNELY CONSENSUS 7229 DMF DWF AMF CAF OHF M1F NHF
V A R GENERATION 2100 DMF DWF AMF CAF OHF M1F NHF OSF DDF
SANDPOINT BLACKBIRD 8809 AMF

Sire: **EF PRIME QUARTER 5369**
G A R PROPHET DMF DWF AMF CAF OHF M1F NHF OSF DDF
EF RITA 3422 DDF
EF RITA 7328

G A R INGENUITY DDC
GAR INGENUITY J2024 DDC
MAPLECREST EVA 7010 CAF NHF DDF

Dam: **BENCHMARK LADY HEATHER 132'14 (1779837)**
BENCHMARK NEXT STEP 8289
BENCHMARK LADY HEATHER 141'11
BENCHMARK COUNTESS 9175

CARCASS	
EPD'S:	
MARB	+0.76
REA	+0.70
FAT	+0.014
CW	+51
ACTUAL:	
%IMF	4.66
REA	+1.14
RIB FAT	+0.30
LMY	63.5%

PERFORMANCE							EPD's				
AOD	BW	205D	365D	ADG	F:G	RFI	BW	WW	YW	RADG	RFI
5	95	622	1372	5.36	4.71:1	-0.20	+2.6	74	132	+0.26	+0.1323

SEPTEMBER 2020 EPD RANKING:		
Top 1% Weaning Weight	Top 6% Marbling	Top 10% Heifer Pregnancy
Top 1% Yearling Weight	Top 9% Ribeye	Top 10% Maternal Calving Ease

• The Grow Safe System costs a bunch of money and lots of management but check out the information one gets. Individually measured, this guy gained 5.36 lbs per day and converted at 4.71 to 1.



LOT 14

Applying science and technology to improve animal well-being and farm profitability.

www.growsafe.com
1-866-929-1879

GrowSafe
SYSTEMS™

BULLS SIRED BY EF PRIME QUARTER 5369

LOT 15

BENCHMARK PRIME QUARTER 86'19

Male BFL 86G May 06, 2019 2106077

CONNELLY CONSENSUS 7229 DMF DWF AMF CAF OHF M1F NHF
V A R GENERATION 2100 DMF DWF AMF CAF OHF M1F NHF OSF DDF
SANDPOINT BLACKBIRD 8809 AMF

Sire: **EF PRIME QUARTER 5369**

G A R PROPHET DMF DWF AMF CAF OHF M1F NHF OSF DDF
EF RITA 3422 DDF
EF RITA 7328

MCC DAYBREAK DMF AMF CAF OHF M1F NHF OSF DDF
G A R DAYBREAK 6860 DDC
G A R OBJECTIVE 277L AMF DDC

Dam: **BENCHMARK LUCY 135'13 DDC (1741675)**

WHITESTONE BARON W279 AMF NHF
BENCHMARK LUCY 09
BENCHMARK LUCY 895

CARCASS

EPD'S:
MARB +0.76
REA +0.66
FAT -0.027
CW +33

ACTUAL:

%IMF 4.70
REA 1.06
RIB FAT +0.25
LMY 63.1%

LOT 16

BENCHMARK PRIME QUARTER 94'19

Male BFL 94G March 07, 2019 2106081

CONNELLY CONSENSUS 7229 DMF DWF AMF CAF OHF M1F NHF
V A R GENERATION 2100 DMF DWF AMF CAF OHF M1F NHF OSF DDF
SANDPOINT BLACKBIRD 8809 AMF

Sire: **EF PRIME QUARTER 5369**

G A R PROPHET DMF DWF AMF CAF OHF M1F NHF OSF DDF
EF RITA 3422 DDF
EF RITA 7328

SITZ UPWARD 307R DMF DWF AMF CAF M1F NHF OSF DDF
TRIARA MADE TO ORDER 366Y AMF
RBF RITA 6A98 4TV7 2A63 AMF

Dam: **BENCHMARK SALLY 63'13 (1741618)**

STANDARD HILL PAYOFF 20P AMF NHF
BENCHMARK SALLY 8197
SUPERB 410H LASS

CARCASS

EPD'S:
MARB +0.77
REA +0.73
FAT +0.018
CW +53

ACTUAL:

%IMF 6.14
REA 1.12
RIB FAT 0.36
LMY 62.1%

PERFORMANCE							EPD's				
AOD	BW	205D	365D	ADG	F:G	RFI	BW	WW	YW	RADG	RFI
6	88	618	1298	4.89	5:1	+0.22	+1.1	68	114	+0.23	+0.1323

SEPTEMBER 2020 EPD RANKING:		
Top 2% Calving Ease	Top 5% Yearling Weight	Top 10% Docility
Top 2% Fat	Top 6% Marbling	Top 10% Ribeye
Top 3% Weaning Weight	Top 8% Maternal Calving Ease	

• Weaning ratio of 112 on Lot #15. Maternal brother at Forty Milke Grazing. Near a 5 lb gain on test and conversion at 5:00 to 1. Check out the rankings above, he checks lots of the boxes.

PERFORMANCE							EPD's				
AOD	BW	205D	365D	ADG	F:G	RFI	BW	WW	YW	RADG	RFI
6	96	646	1423	5.40	4.63:1	-1.04	+2.1	73	132	+0.26	0.0882

SEPTEMBER 2020 EPD RANKING:		
Top 1% Weaning Weight	Top 7% Ribeye	Top 10% Calving Ease
Top 1% Yearling Weight	Top 8% Carcass Weight	Top 10% Milk
Top 6% Marbling		

• One could write pages on this guy. 115 weaning ratio, 114 YW Ratio, 115 ribeye ratio & 113 % IMF ratio. You will really like this bull & he is as quiet a bull as there is in the pen, phenotypically at the top of his game and walks on good feet & legs.

LOT 17

BENCHMARK PRIME QUARTER 124'19

Male BFL 124G May 17, 2019 2106094

CONNELLY CONSENSUS 7229 DMF DWF AMF CAF OHF M1F NHF
V A R GENERATION 2100 DMF DWF AMF CAF OHF M1F NHF OSF DDF
SANDPOINT BLACKBIRD 8809 AMF

Sire: **EF PRIME QUARTER 5369**

G A R PROPHET DMF DWF AMF CAF OHF M1F NHF OSF DDF
EF RITA 3422 DDF
EF RITA 7328

D H D TRAVELER 6807 DMF AMF M1F NHF OSF
WHITESTONE BARON W279 AMF NHF
G A R EXT 704 AMF

Dam: **BENCHMARK ELBA 77'12 (1672056)**

THREE TREES NEXT STEP DMF AMF CAF OHF M1F NHF OSF DDF
BENCHMARK ELBA 8263
BALE 361Z AMBUSH 63E

PERFORMANCE							EPD's				
AOD	BW	205D	365D	ADG	F:G	RFI	BW	WW	YW	RADG	RFI
7	90	598	1279	4.63	5.32:1	+0.93	+1.0	67	118	+0.22	+0.3748

SEPTEMBER 2020 EPD RANKING:		
Top 3% Weaning Weight	Top 8% Calving Ease	
Top 4% Yearling Weight	Top 15% Marbling	
Top 8% Maternal Calving Ease		

• Elba 77'12 has a son at Trautman's and a son in Quebec at Ferne R Bordeleau Inc. Decent numbers across the board on this guy.

CARCASS

EPD'S:
MARB +0.54
REA +0.52
FAT +0.017
CW +37

ACTUAL:

%IMF 3.67
REA 1.16
RIB FAT 0.43
LMY 59.3%

BALOG AUCTION SERVICES INC.

EXPERIENCE - ENTHUSIASM - INTENSITY - ABILITY
LETHBRIDGE, AB

"40 FULL YEARS"
OF SERVING AGRICULTURAL PRODUCERS
IN WESTERN CANADA!

GIVE US A CALL FOR ALL YOUR LIVESTOCK, MACHINERY & REAL ESTATE REQUIREMENTS

BALOG AUCTION
403-320-1980
WEBSITE: WWW.BALOGAUCTION.COM
EMAIL: SOLD@BALOGAUCTION.COM

LOT 16



REFERENCE SIRE

G A R BASELINE AB297



GENOMIC
ENHANCED
CAA-EPDs

VALUE	\$W	\$F	\$G	\$B	\$C
INDEX	+75	+99	+65	+163	+260
RANKING	15%	20%	10%	15%	10%
PERF	AOD	BW	205D	365D	
	ET	62	781	1227	

B/R NEW DESIGN 036

Sire: G A R NEW DESIGN 5050 1492338

G A R PRECISION 706

SS OBJECTIVE T510 0T26

Dam: G A R OBJECTIVE 648S

G A R GRID MAKER X34

V D A R NEW TREND 315

B/R BLACKCAP EMPRESS 76

G A R PRECISION 1680 NHC AMC

G A R EXT 2114

S S TRAVELER 6807

S S MISS RITA R011

G A R GRID MAKER

G A R PRECISION 2488

CE
+15

BW
-0.5

WW
+64

YW
+123

CW
+48

MARB
+0.74

REA
+1.14

FAT
-0.014

DOC
+24

• Baseline was our pick at the Gardiner 2013 Fall Bull Sale. His mother by Objective is a valued donor for Nick Hull's Blackstone Cattle, in Wisconsin. Note the granddam by the breed legend Grid Maker, he out of the highest dollar producing cow ever 2536. There is power in the genetics of these cattle. He has developed beyond our expectations with now 256 calves born at Benchmark.

• Baseline is one special bull ranking in the top 25 bulls for ribeye on the American Angus Association main sire evaluation report fall of 2020 with no other bull among the 25 having a better calving ease direct EPD and he ranks 8th amongst the 25 bulls for marbling.

• OWNED BY GARDINER ANGUS AND BRIDGES ANGUS

• 11 SONS SELL

- Avg. BW: 80 lbs.
- Avg. 205D: 548 lbs.
- Avg. 365D: 1228 lbs

SEPTEMBER 2020 EPD RANKING:

Top 1% Calving Ease	Top 6% Weaning Weight
Top 1% Ribeye	Top 7% Birth Weight
Top 1% Milk	Top 7% Marbling
Top 2% Yearling Weight	Top 7% Fat
Top 2% Residual ADG	Top 9% Docility

BULLS SIRED BY G A R BASELINE AB297

LOT 18

BENCHMARK BASELINE 10'19

Male BFL 10G April 08, 2019 2105615

B/R NEW DESIGN 036 AMF CAF OHF M1F NHF OSF DDC
G A R NEW DESIGN 5050 DMF AMF CAF OHF M1F NHF OSF DDC
G A R PRECISION 706 AMF NHC

Sire: G A R BASELINE AB297 DDF (1775329)

S S OBJECTIVE T510 OT26 DMF AMF CAF OHF M1F NHF OSF DDF
G A R OBJECTIVE 648S AMF
G A R GRID MAKER X34

C R A BEXTOR 872 5205 608 DMF AMF CAF OHF M1F NHF OSF DDF
G A R PROPHET DMF DWF AMF CAF OHF M1F NHF OSF DDF
G A R OBJECTIVE 1885 AMF NHF DDF

Dam: BENCHMARK LUCY 7'17 (1957869)

BENCHMARK MIDLAND 753 AMF DDF
BENCHMARK LUCY 23'15
BENCHMARK LUCY 0131

CARCASS	
EPD'S:	
MARB	+0.99
REA	+0.75
FAT	+0.002
CW	+44
ACTUAL:	
%IMF	6.72
REA	1.11
RIB FAT	0.27
LMY	63.2%

LOT 19

BENCHMARK BASELINE 27'19

Male BFL 27G April 15, 2019 2106047

B/R NEW DESIGN 036 AMF CAF OHF M1F NHF OSF DDC
G A R NEW DESIGN 5050 DMF AMF CAF OHF M1F NHF OSF DDC
G A R PRECISION 706 AMF NHC

Sire: G A R BASELINE AB297

S S OBJECTIVE T510 OT26 DMF AMF CAF OHF M1F NHF OSF DDF
G A R OBJECTIVE 648S AMF
G A R GRID MAKER X34

B/R DESTINATION 727-928 DMF AMF CAF OHF M1F NHF OSF DDF
G A R END POINT 5122 DDF
G A R 28 AMBUSH 1949 DDF

Dam: BENCHMARK BARBARA 76'15 (1834852)

BENCHMARK RIGHT TIME 9211
BENCHMARK BARBARA 94'11
BENCHMARK BARBARA 9149

CARCASS	
EPD'S:	
MARB	+1.12
REA	+0.54
FAT	+0.028
CW	+36
ACTUAL:	
%IMF	7.05
REA	1.02
RIB FAT	0.36
LMY	60.1%

PERFORMANCE							EPD's				
AOD	BW	205D	365D	ADG	F:G	RFI	BW	WW	YW	RADG	RFI
2	80	559	1252	3.99	5.86:1	-0.09	+0.6	63	117	+0.26	+0.3748

SEPTEMBER 2020 EPD RANKING:					
Top 2% Marbling	Top 4% Yearling Weight	Top 5% Ribeye			
Top 3% Milk	Top 5% Calving Ease	Top 8% Weaning Weight			

• A nice tabulation here, sired by Baseline out of a Prophet daughter from a Midland daughter tracing to 3014N as thick a cow as you could ever find. Check the % IMF scan.

PERFORMANCE							EPD's				
AOD	BW	205D	365D	ADG	F:G	RFI	BW	WW	YW	RADG	RFI
4	81	564	1263	5.11	4.49:1	-1.19	-0.4	59	113	+0.28	-0.0220

SEPTEMBER 2020 EPD RANKING:					
Top 1% Marbling	Top 8% Birth Weight	Top 10% Maternal Calving Ease			
Top 2% Calving Ease	Top 9% Residual Average Daily Gain	Top 15% Weaning Weight			
Top 6% Yearling Weight					

• Big time gain, terrific feed conversion with a great % IMF scan of 7.05. His calves will make you money.

LOT 18



LOT 19



BULLS SIRED BY G A R BASELINE AB297

LOT 20

BENCHMARK BASELINE 28'19

Male BFL 28G April 15, 2019 2106048

B/R NEW DESIGN 036 AMF CAF OHF M1F NHF OSF DDC
 G A R NEW DESIGN 5050 DMF AMF CAF OHF M1F NHF OSF DDC
 G A R PRECISION 706 AMF NHC
Sire: G A R BASELINE AB297
 S S OBJECTIVE T510 OT26 DMF AMF CAF OHF M1F NHF OSF DDF
 G A R OBJECTIVE 648S AMF
 G A R GRID MAKER X34

BR MIDLAND DMF AMF CAF OHF M1F NHF OSF DDF
 BENCHMARK MIDLAND 753 AMF DDF
 PF 104 RUTH 3131
Dam: BENCHMARK QUEEN 115'14 (1779824)
 S A V 8180 TRAVELER 004 DMF DWF AMF CAF OHF M1F NHF OSF
 BENCHMARK QUEEN 930 AMF NHF
 RIVERBEND RITA R001

CARCASS	
EPD'S:	
MARB	+0.44
REA	+0.63
FAT	+0.021
CW	+32
ACTUAL:	
%IMF	3.88
REA	1.10
RIB FAT	0.36
LMY	60.9%

LOT 21

BENCHMARK BASELINE 35'19

Male BFL 35G April 18, 2019 2106050

B/R NEW DESIGN 036 AMF CAF OHF M1F NHF OSF DDC
 G A R NEW DESIGN 5050 DMF AMF CAF OHF M1F NHF OSF DDC
 G A R PRECISION 706 AMF NHC
Sire: G A R BASELINE AB297
 S S OBJECTIVE T510 OT26 DMF AMF CAF OHF M1F NHF OSF DDF
 G A R OBJECTIVE 648S AMF
 G A R GRID MAKER X34

S S OBJECTIVE T510 OT26 DMF AMF CAF OHF M1F NHF OSF DDF
 G A R EFFICIENCY 7295 DMF AMF CAF OHF M1F NHF DDF
 G A R ENHAVER G113 NHF
Dam: BENCHMARK ESTER 9303 (1536017)
 PARAMONT AMBUSH 2172 AMF CAF OHF M1F NHF OSF DDF
 THOMAS ESTER 0190
 THOMAS ESTER 8380

CARCASS	
EPD'S:	
MARB	+0.59
REA	+0.59
FAT	-0.017
CW	+36
ACTUAL:	
%IMF	4.56
REA	1.02
RIB FAT	0.27
LMY	63%

PERFORMANCE							EPD's				
AOD	BW	205D	365D	ADG	F:G	RFI	BW	WW	YW	RADG	RFI
5	73	515	1188	4.19	5.71:1	+0.35	-1.6	51	96	+0.25	+0.1764

SEPTEMBER 2020 EPD RANKING:		
Top 1% Calving Ease	Top 2% Birth Weight	Top 8% Maternal Calving Ease

PERFORMANCE							EPD's				
AOD	BW	205D	365D	ADG	F:G	RFI	BW	WW	YW	RADG	RFI
10	65	534	1213	4.12	5.37:1	-1.63	-3.6	51	94	+0.25	+0.0661

SEPTEMBER 2020 EPD RANKING:	
Top 1% Calving Ease	Top 5% Fat
Top 1% Birth Weight	Top 10% Marbling
Top 1% Maternal Calving Ease	Top 10% Milk

* The dam has a son at Bar X Ranch and a son at Mulder Cattle. Note SAV 8180 Traveler 004 on the bottom side the bull that made Schaffs Angus Valley. Heifer bull in Lot 20.

* From a cow that has stood the test of time. On Grow Safe this guy finished 7th out of 68 bulls. Another heifer bull.

LOT 22

BENCHMARK BASELINE 40'19

Male BFL 40G April 22, 2019 2105632

B/R NEW DESIGN 036 AMF CAF OHF M1F NHF OSF DDC
 G A R NEW DESIGN 5050 DMF AMF CAF OHF M1F NHF OSF DDC
 G A R PRECISION 706 AMF NHC
Sire: G A R BASELINE AB297
 S S OBJECTIVE T510 OT26 DMF AMF CAF OHF M1F NHF OSF DDF
 G A R OBJECTIVE 648S AMF
 G A R GRID MAKER X34

G A R PROPHET DMF DWF AMF CAF OHF M1F NHF OSF DDF
 BENCHMARK MICAH 247'13
 G A R COMPLETE 1381
Dam: BENCHMARK BARBARA ROSE 83'16 (1899352)
 LCC FEW DOLLARS MORE H013N AMF NHC
 BENCHMARK BARBARA ROSE 891 NHF
 BENCHMARK BARBARA ROSE 6122

PERFORMANCE							EPD's				
AOD	BW	205D	365D	ADG	F:G	RFI	BW	WW	YW	RADG	RFI
4	76	522	1198	4.21	5.56:1	+0.64	-0.5	47	90	+0.24	+0.3086

SEPTEMBER 2020 EPD RANKING:		
Top 1% Ribeye	Top 1% Milk	Top 7% Birth Weight
Top 1% Fat	Top 2% Calving Ease	Top 15% Docility
Top 1% Maternal Calving Ease	Top 2% Marbling	

* Heifer bull on Lot 22 with good end product predictability.

CARCASS	
EPD'S:	
MARB	+0.92
REA	+0.91
FAT	-0.029
CW	+37
ACTUAL:	
%IMF	5.63
REA	1.14
RIB FAT	0.23
LMY	64.3%

Farming isn't like any other business

We believe in giving you many options for your farm insurance, without adding coverage you don't need. It's what you'd expect from a company founded by farmers. **Let's talk.**

Home Auto Life Investments Group Business Farm Travel

Brent Merriman
 Financial Advisor
 Merriman Insurance Services Ltd
 502 5 Ave S | Lethbridge
 403-382-2820 | www.cooperators.ca/Merriman-Insurance



BULLS SIRED BY G A R BASELINE AB297

LOT 23 BENCHMARK BASELINE 61'19

Male BFL 61G April 30, 2019 2105637

B/R NEW DESIGN 036 AMF CAF OHF M1F NHF OSF DDC
G A R NEW DESIGN 5050 DMF AMF CAF OHF M1F NHF OSF DDC
G A R PRECISION 706 AMF NHC
Sire: G A R BASELINE AB297
S S OBJECTIVE T510 OT26 DMF AMF CAF OHF M1F NHF OSF DDF
G A R OBJECTIVE 648S AMF
G A R GRID MAKER X34

G A R PROPHET DMF DWF AMF CAF OHF M1F NHF OSF DDF
BENCHMARK MICAH 247'13
G A R COMPLETE 1381

Dam: BENCHMARK BARBARA 97'16 (1899359)
G A R RETAIL PRODUCT DMF AMF CAF OHF M1F NHF OSF DDF
BENCHMARK BARBARA 70013
BENCHMARK BARBARA 271

CARCASS	
EPD'S:	
MARB	+0.93
REA	+0.58
FAT	+0.044
CW	+31
ACTUAL:	
%IMF	5.36
REA	1.14
RIB FAT	0.60
LMY	55.1%

LOT 24 BENCHMARK BASELINE 78'19

Male BFL 78G May 04, 2019 2106066

B/R NEW DESIGN 036 AMF CAF OHF M1F NHF OSF DDC
G A R NEW DESIGN 5050 DMF AMF CAF OHF M1F NHF OSF DDC
G A R PRECISION 706 AMF NHC
Sire: G A R BASELINE AB297
S S OBJECTIVE T510 OT26 DMF AMF CAF OHF M1F NHF OSF DDF
G A R OBJECTIVE 648S AMF
G A R GRID MAKER X34

G A R PROPHET DMF DWF AMF CAF OHF M1F NHF OSF DDF
G A R PROPHET A011 DDF
G A R 1407 NEW DESIGN 3064 NHF

Dam: BENCHMARK BERTHA 149'13 (1741685)
RITO 419 OF 2536 6807 DMF AMF CAF OHF M1F NHF OSF DDF
BENCHMARK BERTHA 27'11
ROYAL BERTHA DRCC 223K

CARCASS	
EPD'S:	
MARB	+0.93
REA	+0.92
FAT	-0.004
CW	+29
ACTUAL:	
%IMF	5.06
REA	1.32
RIB FAT	0.31
LMY	63.2%

PERFORMANCE							EPD's				
AOD	BW	205D	365D	ADG	F:G	RFI	BW	WW	YW	RADG	RFI
3	81	572	1276	4.85	4.65:1	-1.19	+1.2	53	102	+0.24	+0.3748

SEPTEMBER 2020 EPD RANKING:		
Top 1% Milk	Top 8% Calving Ease	Top 15% Yearling Weight
Top 2% Marbling	Top 8% Maternal Calving Ease	

* A maternal brother by Arsenal works for Denis Webb. Nice birth weight, with good gain and great conversion finishing 11th on the Grow Safe Test.

PERFORMANCE							EPD's				
AOD	BW	205D	365D	ADG	F:G	RFI	BW	WW	YW	RADG	RFI
6	84	460	1146	4.29	N/A	N/A	+0.7	51	101	+0.27	N/A

SEPTEMBER 2020 EPD RANKING:		
Top 1% Ribeye	Top 3% Calving Ease	Top 10% RADG
Top 2% Marbling	Top 10% Milk	Top 15% Yearling Weight

* On scanning this guy had a 123 REA ratio and 105 IMF ratio with a lean meat yield of 63.2%. It is tough making a buck feeding cattle but these genetics sure help.

LOT 25 BENCHMARK BASELINE 85'19

Male LAA 85G May 06, 2019 2105449

B/R NEW DESIGN 036 AMF CAF OHF M1F NHF OSF DDC
G A R NEW DESIGN 5050 DMF AMF CAF OHF M1F NHF OSF DDC
G A R PRECISION 706 AMF NHC
Sire: G A R BASELINE AB297
S S OBJECTIVE T510 OT26 DMF AMF CAF OHF M1F NHF OSF DDF
G A R OBJECTIVE 648S AMF
G A R GRID MAKER X34

BR MIDLAND DMF AMF CAF OHF M1F NHF OSF DDF
BENCHMARK MIDLAND 753 AMF DDF
PF 104 RUTH 3131

Dam: BENCHMARK LADY T 56'13 (1731520)
G A R EFFICIENCY 7295 DMF AMF CAF OHF M1F NHF OSF DDF
BENCHMARK LADY T 9134
BENCHMARK LADY T 6144

CARCASS	
EPD'S:	
MARB	+0.66
REA	+0.73
FAT	-0.002
CW	+42
ACTUAL:	
%IMF	5.21
REA	1.15
RIB FAT	0.37
LMY	60.3%

LOT 26 BENCHMARK BASELINE 107'19

Male BFL 107G May 11, 2019 2105642

B/R NEW DESIGN 036 AMF CAF OHF M1F NHF OSF DDC
G A R NEW DESIGN 5050 DMF AMF CAF OHF M1F NHF OSF DDC
G A R PRECISION 706 AMF NHC
Sire: G A R BASELINE AB297
S S OBJECTIVE T510 OT26 DMF AMF CAF OHF M1F NHF OSF DDF
G A R OBJECTIVE 648S AMF
G A R GRID MAKER X34

G A R PROPHET DMF DWF AMF CAF OHF M1F NHF OSF DDF
G A R PROPHET A011 DDF
G A R 1407 NEW DESIGN 3064 NHF

Dam: BENCHMARK EVERELDA 167'16 (1899396)
G A R PROPHET DMF DWF AMF CAF OHF M1F NHF OSF DDF
BENCHMARK EVERELDA ENTENSE29'14
C F EVERELDA ENTENSE 1903 AMF NHF

CARCASS	
EPD'S:	
MARB	+1.23
REA	+0.82
FAT	+0.012
CW	+62
ACTUAL:	
%IMF	6.69
REA	1.07
RIB FAT	0.47
LMY	57.8%

PERFORMANCE							EPD's				
AOD	BW	205D	365D	ADG	F:G	RFI	BW	WW	YW	RADG	RFI
6	81	564	1208	4.5	4.59:1	-2.40	-0.3	55	103	+0.28	-0.0661

SEPTEMBER 2020 EPD RANKING:		
Top 3% Calving Ease	Top 9% RADG	Top 15% Yearling Weight
Top 7% Ribeye	Top 10% Marbling	Top 15% Milk
Top 9% Birth Weight		

* Fifth ranked bull on Grow Safe test. Note the granddam Lady T9134 is an Elite Dam by CAA standards. If you really want to improve efficiency this guy will do it. Will work on heifers.

PERFORMANCE							EPD's				
AOD	BW	205D	365D	ADG	F:G	RFI	BW	WW	YW	RADG	RFI
3	80	576	1335	5.08	4.95:1	+0.66	+1.1	74	137	+0.29	0.3307

SEPTEMBER 2020 EPD RANKING:		
Top 1% Marbling	Top 1% Calving Ease	Top 3% Ribeye
Top 1% Yearling Weight	Top 1% Milk	Top 6% RADG
Top 1% Weaning Weight	Top 2% Carcass Weight	Top 8% Maternal Calving Ease

* From an A011. Daughter who traces to Everelda 1903 the dam of Foundation who sold to Basin Angus & Barragree Cattle in Sale XIV. Lots of growth & gain with good conversion and terrific end product merit.

BULLS SIRED BY G A R BASELINE AB297

LOT 27

BENCHMARK BASELINE 152'19

Male BFL 152G July 09, 2019 2106128

B/R NEW DESIGN 036 AMF CAF OHF M1F NHF OSF DDC
 G A R NEW DESIGN 5050 DMF AMF CAF OHF M1F NHF OSF DDC
 G A R PRECISION 706 AMF NHC
Sire: G A R BASELINE AB297
 S S OBJECTIVE T510 OT26 DMF AMF CAF OHF M1F NHF OSF DDF
 G A R OBJECTIVE 648S AMF
 G A R GRID MAKER X34

CARCASS	
EPD'S:	
MARB	+0.83
REA	+0.76
FAT	-0.006
CW	+34
ACTUAL:	
%IMF	3.82
REA	1.39
RIB FAT	0.25
LMY	N/A

MCC DAYBREAK DMF AMF CAF OHF M1F NHF OSF DDF
 G A R DAYBREAK 6860 DDC
 G A R OBJECTIVE 277L AMF DDC
Dam: BENCHMARK IDOLDEE 205'13 (1766494)
 STANDARD HILL PAYOFF 20P AMF NHF
 BENCHMARK IDOLDEE 6283
 ROYAL IDOLDEE DRCC 3049N

LOT 28

BENCHMARK BASELINE 164'19

Male BFL 164G June 18, 2019 2106117

B/R NEW DESIGN 036 AMF CAF OHF M1F NHF OSF DDC
 G A R NEW DESIGN 5050 DMF AMF CAF OHF M1F NHF OSF DDC
 G A R PRECISION 706 AMF NHC
Sire: G A R BASELINE AB297
 S S OBJECTIVE T510 OT26 DMF AMF CAF OHF M1F NHF OSF DDF
 G A R OBJECTIVE 648S AMF
 G A R GRID MAKER X34

CARCASS	
EPD'S:	
MARB	+0.46
REA	+1.13
FAT	-0.025
CW	+58
ACTUAL:	
%IMF	2.83
REA	1.19
RIB FAT	0.15
LMY	64.8%

B/R NEW DESIGN 036 AMF CAF OHF M1F NHF OSF DDC
 G A R PREDESTINED DMF AMF CAF OHF M1F NHF OSF DDC
 G A R EXT 4206
Dam: BENCHMARK TIBBIE D 221'12 DDF (1712514)
 SITZ ALLIANCE 6595 DMF DWF AMF CAF OHF M1F NHF OSF DDF
 TIBBIE D OF ALCAN 145
 MVF TIBBIE 80J

PERFORMANCE							EPD's				
AOD	BW	205D	365D	ADG	F:G	RFI	BW	WW	YW	RADG	RFI
6	78	563	1220	4.11	N/A	N/A	-0.4	55	102	+0.26	N/A

PERFORMANCE							EPD's				
AOD	BW	205D	365D	ADG	F:G	RFI	BW	WW	YW	RADG	RFI
7	96	600	1214	3.84	N/A	N/A	+3.2	61	113	+0.25	N/A

SEPTEMBER 2020 EPD RANKING:		
Top 3% Calving Ease	Top 5% Ribeye	Top 15% Maternal Calving Ease
Top 4% Marbling	Top 8% Birth Weight	Top 15% Fat
Top 4% Milk	Top 15% Yearling Weight	

SEPTEMBER 2020 EPD RANKING:		
Top 1% Ribeye	Top 2% Fat	Top 6% Yearling Weight
Top 1% Milk	Top 4% Carcass Weight	Top 10% Weaning Weight

• Heifer bull with Lot 27. He is a little younger so did not make the Grow Safe test group.

• From own daughter of Predestined who has a son at Rosetown Farming.



THE BEST TASTING BEEF FOR NEARLY 100 YEARS.

Currently, our fourth generation in ranching continues the ongoing quest for the productive and efficient cattle that are continually exceeding the industry standards and satisfying all who consume beef. The Munton family has been pursuing Angus beef genetics for the proven tenderness and far superior taste that only Premium Benchmark Angus Cattle provide.



403-732-5122
 BENQMEATS.NET
 BENQMEATS@GMAIL.COM
 100 FACTORY DRIVE
 BOX 129
 PICTURE BUTTE, AB T0K 1V0
 @BENCHMARK.ANGUS
 @BENCHMARK.ANGUS

REFERENCE SIRE

BASIN PAYWEIGHT 1682



VALUE	\$W	\$F	\$G	\$B	\$C
INDEX	+94	+94	+42	+136	+249
RANKING	1%	25%	50%	25%	40%
PERF	AOD	BW	205D	365D	
	ET	89	757	1197	

VERMILION PAYWEIGHT J847
Sire: BASIN PAYWEIGHT 006S
 BASIN LUCY 3829
 HARB PENDLETON 765 J H
Dam: 21AR O LASS 7017
 21AR O LASS F24A

VERMILION DATELINE 7078
 VERMILION LASS 7969
 C A FUTURE DIRECTION 5321
 BASIN LUCY 178E
 S S TRAVELER 6807
 S S MISS RITA R011
 G A R GRID MAKER
 G A R PRECISION 2488

GENOMIC
 ENHANCED
 CAA-EPDs

CE
 +7
 BW
 +0.6
 WW
 +67
 YW
 +118

CW
 +52

MARB
 +0.62

REA
 +0.25

FAT
 +0.061

DOC
 +24

• I think it would be fair to say that 1682 has set the Purebred Angus cattle business on fire. Sons and daughters have sold for literally hundreds of thousands of dollars with VAR Power Play 7018 selling for \$730,000 for half interest.

• The first semen to come to Canada was in the spring of 2018 so the bulls selling in this sale by 1682 are some of the first available. You will find them moderate, deeper than deep and thicker than thick.

• OWNED BY BASIN ANGUS & ELLIS CATTLE CO & ABS GLOBAL

• **4 SONS SELL**

- Avg. BW: 79 lbs.
- Avg. 205D: 594 lbs.
- Avg. 365D: 1333 lbs

SEPTEMBER 2020 EPD RANKING:

Top 1% Milk	Top 9% Carcass Weight
Top 3% Weaning Weight	Top 9% Docility
Top 3% Yearling Weight	Top 10% Marbling

BULLS SIRED BY BASIN PAYWEIGHT 1682

LOT 29 BENCHMARK PAYWEIGHT 6'19

Male BFL 6G April 04, 2019 2105609

VERMILION PAYWEIGHT J847 DMF AMF CAF OHF M1F NHF OSF
 BASIN PAYWEIGHT 006S AMF CAF OHF M1F NHF DDF
 BASIN LUCY 3829 AMF NHF
Sire: BASIN PAYWEIGHT 1682
 HARB PENDLETON 765 J H DMF AMF CAF OHF M1F NHF OSF DDF
 21AR O LASS 7017
 21AR O LASS F24A

G A R NEW DESIGN 5050 DMF AMF CAF OHF M1F NHF OSF DDC
 G A R BASELINE AB297 DDF
 G A R OBJECTIVE 648S AMF
Dam: BENCHMARK MISS AMERICA 65'17 (1964412)
 G A R PROPHET A011 DDF
 BENCHMARK MISS AMERICA 106'13
 BENCHMARK MISS AMERICA 63'11

CARCASS	
EPD'S:	
MARB	+0.71
REA	+0.20
FAT	+0.038
CW	+39
ACTUAL:	
%IMF	5.35
REA	1.01
RIB FAT	0.50
LMY	57.2%

LOT 30 BENCHMARK PAYWEIGHT 7'19

Male BFL 7G April 05, 2019 2105611

VERMILION PAYWEIGHT J847 DMF AMF CAF OHF M1F NHF OSF
 BASIN PAYWEIGHT 006S AMF CAF OHF M1F NHF DDF
 BASIN LUCY 3829 AMF NHF
Sire: BASIN PAYWEIGHT 1682
 HARB PENDLETON 765 J H DMF AMF CAF OHF M1F NHF OSF DDF
 21AR O LASS 7017
 21AR O LASS F24A

SYDGEN TRUST 6228 DMF DWF AMF CAF OHF M1F NHF OSF DDF
 G A R INNOVATION 3002G
 GOODE MANDATE 1751 DDF
Dam: BENCHMARK WENDY 155'17 (1964469)
 G A R PREDESTINED DMF AMF CAF OHF M1F NHF OSF DDC
 BENCHMARK WENDY 94 DDF
 PRIDE N083 OF WHITESTONE

CARCASS	
EPD'S:	
MARB	+0.81
REA	+0.42
FAT	+0.012
CW	+42
ACTUAL:	
%IMF	5.11
REA	1.15
RIB FAT	0.18
LMY	65.5%

PERFORMANCE							EPD's				
AOD	BW	205D	365D	ADG	F:G	RFI	BW	WW	YW	RADG	RFI
2	86	609	1311	4.56	5.13:1	-1.15	+3.1	62	111	+0.25	+0.1543

PERFORMANCE							EPD's				
AOD	BW	205D	365D	ADG	F:G	RFI	BW	WW	YW	RADG	RFI
2	73	565	1366	6.00	3.67:1	-3.17	+1.5	60	107	+0.28	-0.1984

SEPTEMBER 2020 EPD RANKING:		
Top 3% Milk	Top 8% Marbling	Top 8% Maternal Calving Ease
Top 7% Docility	Top 8% Yearling Weight	Top 9% Weaning Weight

SEPTEMBER 2020 EPD RANKING:		
Top 1% Milk	Top 9% Residual ADG	Top 10% Yearling Weight
Top 5% Marbling	Top 10% Weaning Weight	

• From a two year old Baseline heifer. If you like them stout, moderate, deep & thick, take a look here. This guy is a tank.

• Talk about performance! ADG 6 lbs feed conversion 3.67 to 1. Talk about a money maker! These numbers are independently calculated by Grow Safe. This bull ranked 2nd in a group of 68 Angus bulls. Check the LMY on this guy.



DW DAVIDSON & WILLIAMS LLP
 EST. 1885
Serving Southern Alberta for 135 Years

WE OFFER SERVICES IN THE AREAS OF:

- Real Estate • Corporate & Commercial
- Personal Injury • Labour & Employment
- Wills & Estates • Litigation & Dispute Resolution
- Farm & Agricultural • Family Law ...and much more

501 4 STREET SOUTH • LETHBRIDGE, ALBERTA • (403) 328-1766 • www.dwlaw.pro

BULLS SIRED BY BASIN PAYWEIGHT 1682

LOT 31 BENCHMARK PAYWEIGHT 23'19

Male BFL 23G April 14, 2019 2105625

VERMILION PAYWEIGHT J847 DMF AMF CAF OHF M1F NHF OSF
BASIN PAYWEIGHT 006S AMF CAF OHF M1F NHF DDF
BASIN LUCY 3829 AMF NHF

Sire: **BASIN PAYWEIGHT 1682**

HARB PENDLETON 765 J H DMF AMF CAF OHF M1F NHF OSF DDF
21AR O LASS 7017
21AR O LASS F24A

B/R FUTURE DIRECTION 4268 AMF CAF OHF NHF DDF
WR JOURNEY-1X74 DMF DWF AMF CAF OHF M1F NHF OSF DDF
2 BAR 5050 NEW DESIGN 7831

Dam: **BENCHMARK LASSIE 20'17 (1957879)**

G A R BASELINE AB297 DDF
BENCHMARK LASSIE 62'15
BENCHMARK LASSIE 926 NHF

CARCASS	
EPD'S:	
MARB	+0.79
REA	+0.67
FAT	+0.024
CW	+71
ACTUAL:	
%IMF	6.51
REA	1.03
RIB FAT	0.36
LMY	61.4%

LOT 32 BENCHMARK PAYWEIGHT 34'19

Male BFL 34G April 17, 2019 2105628

VERMILION PAYWEIGHT J847 DMF AMF CAF OHF M1F NHF OSF
BASIN PAYWEIGHT 006S AMF CAF OHF M1F NHF DDF
BASIN LUCY 3829 AMF NHF

Sire: **BASIN PAYWEIGHT 1682**

HARB PENDLETON 765 J H DMF AMF CAF OHF M1F NHF OSF DDF
21AR O LASS 7017
21AR O LASS F24A

G A R NEW DESIGN 5050 DMF AMF CAF OHF M1F NHF OSF DDC
G A R BASELINE AB297 DDF
G A R OBJECTIVE 648S AMF

Dam: **BENCHMARK PATRICIA 115'17 DDF (1964443)**

B/R NEW DESIGN 036 AMF CAF OHF M1F NHF OSF DDC
ROYAL PATRICIA DRCC 7022T
ROYAL PATRICIA DRCC 2039M AMF NHF

CARCASS	
EPD'S:	
MARB	+0.45
REA	+0.55
FAT	+0.042
CW	+43
ACTUAL:	
%IMF	3.94
REA	1.29
RIB FAT	0.39
LMY	61.9%

PERFORMANCE							EPD's				
AOD	BW	205D	365D	ADG	F:G	RFI	BW	WW	YW	RADG	RFI
2	77	628	1370	5.05	4.28:1	-3.42	+1.8	88	154	+0.34	-0.3307

PERFORMANCE							EPD's				
AOD	BW	205D	365D	ADG	F:G	RFI	BW	WW	YW	RADG	RFI
2	80	575	1286	4.44	N/A	N/A	+0.5	59	108	+0.26	N/A

SEPTEMBER 2020 EPD RANKING:		
Top 1% Weaning Weight	Top 1% Residual ADG	Top 7% Docility
Top 1% Yearling Weight	Top 1% Milk	Top 8% Maternal Calving Ease
Top 1% Carcass Weight	Top 5% Marbling	Top 10% Ribeye

SEPTEMBER 2020 EPD RANKING:		
Top 1% Milk	Top 10% Maternal Calving Ease	Top 15% Weaning Weight
Top 8% Calving Ease	Top 15% Birth Weight	Top 15% RADG
Top 10% Yearling Weight		

• Lot 31 is very special. What a spread +1.8 BW to YW of 154 Terrific performance and very good end product merit. This guy ranked #1 on Grow Safe group of 68 Black Angus Bulls.

• From a real nice Baseline two year old. This guy could work on heifers. The dam's 2020 Prime Quarter bull calf came at 72 lbs.



LOT 31

Bow Valley Genetics

Embryo Transfer Services
IVF
Certified for Exportable Embryo Production
Export Qualified Semen Collection and Bull Stud
Owner's Use Semen
Embryo & Semen Storage & Distribution

Ph: 587.887.1934
Email: embryos@bowvalleygenetics.com
Web: www.bowvalleygenetics.com

Great neighbours know when to listen.

ATB has a deeply rooted relationship with Alberta's farmers. It remains at the heart of everything we do today. It starts with really listening—because not only are we Albertans, we're also your neighbours. Our dedicated experts can create custom solutions that will help your farm and our province grow. After all, we're in this together.

Stop by to talk with us today.

atb.com/agriculture

REFERENCE SIRE

BRUIN BENZ 5361



VALUE	\$W	\$F	\$G	\$B	\$C
INDEX	+82	+111	+32	+143	+225
RANKING	5%	5%	%	45%	30%
PERF	AOD	BW	205D	365D	
	2	77	696	1286	

BASIN PAYWEIGHT 006S

Sire: BASIN PAYWEIGHT 1682

21AR O LASS 7017

G A R INGENUITY 1903938 DDC

Dam: BRUIN 6759 FOREVER LADY 3327

BRUIN 4168 FOREVER LADY 1040

VERMILION PAYWEIGHT J847

BASIN LUCY 3829 US14401027

HARB PENDLETON 765 J H 1471747

21AR O LASS F24A

G A R NEW DESIGN 5050

G A R OBJECTIVE 1067

V A R GRID MAKER 4168

BRUIN 4132 FOREVER LADY 8010



GENOMIC
ENHANCED
CAA-EPDs

CE
+6

BW
+1.0

WW
+75

YW
+137

CW
+66

MARB
+0.29

REA
+0.57

FAT
+0.050

DOC
+10

RADG
+0.26

• The fall of 2017 found us searching out a 1682 son as semen was not available on 1682 himself. As you can see from his picture he expresses the depth of body and thickness you would expect from a 1682 son and Benz puts that stamp on his calves as one would expect. If you are wanting early growth and feedlot gain, check out these Benz sons.

• OWNED WITH BRUIN ANGUS RANCH

• **8 SONS SELL**

- Avg. BW: 88 lbs.
- Avg. 205D: 588 lbs.
- Avg. 365D: 1275 lbs

SEPTEMBER 2020 EPD RANKING:

Top 1% Yearling Weight	Top 8% Maternal Calving Ease
Top 1% Milk	Top 15% Residual ADG
Top 1% Weaning Weight	Top 20% Ribeye
Top 1% Carcass Weight	

BULLS SIRED BY BRUIN BENZ 5361

LOT 33 BENCHMARK MERCEDES 76'19

Male BFL 76G May 04, 2019 2106067

BASIN PAYWEIGHT 006S AMF CAF OHF M1F NHF DDF
BASIN PAYWEIGHT 1682 DMF DWF AMF CAF OHF M1F NHF OSF DDF
21AR O LASS 7017

Sire: **BRUIN BENZ 5361 (2008381)**

G A R INGENUITY DDC
BRUIN 6759 FOREVER LADY 3327 OSF DDF
BRUIN 4168 FOREVER LADY 1040

THREE TREES NEXT STEP DMF AMF CAF OHF M1F NHF OSF DDF
BENCHMARK NEXT STEP 8289
BALE 361Z AMBUSH 63E

Dam: **BENCHMARK BLACKBIRD 99'12 (1672069)**

G A R EFFICIENCY 7295 DMF AMF CAF OHF M1F NHF DDF
BENCHMARK BLACKBIRD 091
BENCHMARK BLACKBIRD 776

CARCASS	
EPD'S:	
MARB	+0.43
REA	+0.44
FAT	+0.032
CW	+58
ACTUAL:	
%IMF	3.72
REA	1.05
RIB FAT	0.40
LMY	59.5%

LOT 34 BENCHMARK MERCEDES 81'19

Male BFL 81G May 05, 2019 2106071

BASIN PAYWEIGHT 006S AMF CAF OHF M1F NHF DDF
BASIN PAYWEIGHT 1682 DMF DWF AMF CAF OHF M1F NHF OSF DDF
21AR O LASS 7017

Sire: **BRUIN BENZ 5361 (2008381)**

G A R INGENUITY DDC
BRUIN 6759 FOREVER LADY 3327 OSF DDF
BRUIN 4168 FOREVER LADY 1040

G A R PROPHET DMF DWF AMF CAF OHF M1F NHF OSF DDF
G A R PROPHET A011 DDF
G A R 1407 NEW DESIGN 3064 NHF

Dam: **BENCHMARK BARBARA 88'13 (1741639)**

BENCHMARK RIGHT TIME 9211
BENCHMARK BARBARA 94'11
BENCHMARK BARBARA 9149

CARCASS	
EPD'S:	
MARB	+0.79
REA	+0.09
FAT	+0.055
CW	+37
ACTUAL:	
%IMF	5.05
REA	0.90
RIB FAT	0.44
LMY	55.9%

PERFORMANCE							EPD's				
AOD	BW	205D	365D	ADG	F:G	RFI	BW	WW	YW	RADG	RFI
7	93	662	1300	3.97	6.63:1	+1.85	+1.0	80	130	+0.21	+0.3968

SEPTEMBER 2020 EPD RANKING:	
Top 1% Weaning Weight	Top 1% Milk
Top 1% Yearling Weight	Top 4% Carcass Weight

• Lot 33 had a weaning ratio of 120! If you sell your calves at weaning, this guy will add some lbs. Being 33 lbs over the average for expected weaning weight. So if he sires 80 calves over the years at 33lb per calf that amounts to 2640lbs and at \$2 you are ahead of the game by \$5,280.

PERFORMANCE							EPD's				
AOD	BW	205D	365D	ADG	F:G	RFI	BW	WW	YW	RADG	RFI
6	73	535	1178	4.10	5.78:1	+0.99	-1.6	55	101	+0.22	+0.4850

SEPTEMBER 2020 EPD RANKING:		
Top 1% Maternal Calving Ease	Top 2% Birth Weight	Top 15% Yearling Weight
Top 2% Calving Ease	Top 5% Marbling	

• Barabara 88'13 has a son at Barry Snows and a son at Dennis Webb's with a daughter at Bayes and another in the herd. This guy will work on heifers and his calves will have extra grow & gain.

LOT 35 BENCHMARK MERCEDES 97'19

Male BFL 97G May 07, 2019 2106084

BASIN PAYWEIGHT 006S AMF CAF OHF M1F NHF DDF
BASIN PAYWEIGHT 1682 DMF DWF AMF CAF OHF M1F NHF OSF
21AR O LASS 7017

Sire: **BRUIN BENZ 5361 (2008381)**

G A R INGENUITY DDC
BRUIN 6759 FOREVER LADY 3327 OSF DDF
BRUIN 4168 FOREVER LADY 1040

ROYAL RIGHT TIME DRCC 6063S
BENCHMARK RIGHT TIME 9211
AAF BLACKCAP 15F DDF

Dam: **BENCHMARK LUCY 61'11 DDF (1618277)**

G A R EFFICIENCY 7295 DMF AMF CAF OHF M1F NHF DDF
BENCHMARK LUCY 9189
BENCHMARK LUCY 66

PERFORMANCE							EPD's				
AOD	BW	205D	365D	ADG	F:G	RFI	BW	WW	YW	RADG	RFI
8	96	648	1369	4.94	5.30:1	+0.88	+3.4	74	127	+0.25	+0.1984

SEPTEMBER 2020 EPD RANKING:		
Top 1% Weaning Weight	Top 9% Fat	Top 15% Milk
Top 1% Yearling Weight	Top 9% Docility	Top 25% Marbling
Top 4% Carcass Weight	Top 15% Ribeye	

• Performance bull with a weaning weight ratio of 116 and a yearling weight ratio of 106. This guy will give you calves that grow, gain and grade.

CARCASS	
EPD'S:	
MARB	+0.50
REA	+0.60
FAT	-0.012
CW	+58
ACTUAL:	
%IMF	4.36
REA	1.08
RIB FAT	0.30
LMY	62.7%

We Can...

MILT'S EARTHMOVING LTD.

- Dig Dugouts
- Clean Dugouts
- 60' Long Reach Excavator
- Scraper Work
- Drainage Ditches
- Basements
- PVC Line Installation
- Road Maintenance

Burdett, Alberta
Cell: (403) 382-7895 • Phone: (403) 833-3766 • Fax: (403) 833-3706



LOT 35

BULLS SIRED BY BRUIN BENZ 5361

LOT 36

BENCHMARK MERCEDES 117'19

Male BFL 117G May 12, 2019 2106089

BASIN PAYWEIGHT 006S AMF CAF OHF M1F NHF DDF
BASIN PAYWEIGHT 1682 DMF DWF AMF CAF OHF M1F NHF OSF
21AR O LASS 7017

Sire: **BRUIN BENZ 5361 (2008381)**
G A R INGENUITY DDC

BRUIN 6759 FOREVER LADY 3327 OSF DDF
BRUIN 4168 FOREVER LADY 1040

G A R PROPHET A011 DDF
BENCHMARK PROPHET 155'13
BENCHMARK MAIDEN 79'11 NHF

Dam: **BENCHMARK QUEEN 168'15 (1839072)**
S S TRAVELER 6807 T510 DMF AMF CAF OHF M1F NHF DDF
G A R T510 TRAVELER 264 AMF
G A R EXPECTATION 1151

CARCASS	
EPD'S:	
MARB	+0.41
REA	+0.62
FAT	+0.012
CW	+65
ACTUAL:	
%IMF	4.67
REA	1.03
RIB FAT	0.39
LMY	60.3%

LOT 37

BENCHMARK MERCEDES 120'19

Male BFL 120G May 14, 2019 2106091

BASIN PAYWEIGHT 006S AMF CAF OHF M1F NHF DDF
BASIN PAYWEIGHT 1682 DMF DWF AMF CAF OHF M1F NHF OSF
21AR O LASS 7017

Sire: **BRUIN BENZ 5361 (2008381)**
G A R INGENUITY DDC

BRUIN 6759 FOREVER LADY 3327 OSF DDF
BRUIN 4168 FOREVER LADY 1040

G A R PROPHET DMF DWF AMF CAF OHF M1F NHF OSF DDF
G A R PROPHET A011 DDF
G A R 1407 NEW DESIGN 3064 NHF

Dam: **BENCHMARK BLACKBIRD 189'13 (1766482)**
WOODHILL FORESIGHT DMF AMF CAF OHF M1F NHF OSF DDF
BENCHMARK BLACKBIRD 021
BENCHMARK BLACKBIRD 661

CARCASS	
EPD'S:	
MARB	+0.56
REA	+0.64
FAT	+0.036
CW	+54
ACTUAL:	
%IMF	4.31
REA	1.19
RIB FAT	0.40
LMY	60.1%

PERFORMANCE							EPD's				
AOD	BW	205D	365D	ADG	F:G	RFI	BW	WW	YW	RADG	RFI
4	90	628	1481	6.24	4.6:1	+2.18	+1.8	66	134	+0.28	+0.5071

SEPTEMBER 2020 EPD RANKING:		
Top 1% Yearling Weight	Top 7% Milk	Top 15% Calving Ease
Top 1% Carcass Weight	Top 9% Residual ADG	Top 15% Ribeye
Top 4% Weaning Weight		

* Another real performance bull with a weaning ratio of 113 and a yearling ratio of 125. Note the gain and conversion here. Lot #36 checks all the boxes. Take special note if you are feeding out his calves, a carcass weight EPD of +65, that is 29lbs over the average Angus bull and at \$2.50/lb. that puts \$72.50 more in your pocket over average.

PERFORMANCE							EPD's				
AOD	BW	205D	365D	ADG	F:G	RFI	BW	WW	YW	RADG	RFI
6	85	549	1231	4.67	4.84:1	-0.57	+1.1	64	114	+0.23	+0.2425

SEPTEMBER 2020 EPD RANKING:		
Top 1% Milk	Top 7% Carcass Weight	Top 10% Calving Ease
Top 5% Yearling Weight	Top 8% Maternal Calving Ease	Top 15% Marbling
Top 6% Weaning Weight	Top 10% Ribeye	

* A maternal brother by Baseline sold to Laidlaw Ranching in Sale XXIII. Here is a bull that will get the job done. Moderate birth weight, good growth, good carcass weight & the calves will grade.



LOT 36

Sisters
Pub & Grill

814 - 2 Ave S Lethbridge, AB
sisters@telus.net 403-328-4882



Milk River
Home Hardware
Building Centre
109 Centre Ave.
Box 240
Milk River
Alberta

T 403-647-3636
403-647-3515

C 403-642-7820
F 403-647-3533

mrlumber@mrcable.ca

Terry Russell
Kathy Russel

Looking for fence posts & barb wire?
We have a great selection of peeled, Spray Lakes posts available!

BULLS Sired BY BRUIN BENZ 5361

LOT 38

BENCHMARK MERCEDES 122'19

Male BFL 122G May 16, 2019 2106093

BASIN PAYWEIGHT 006S AMF CAF OHF M1F NHF DDF
 BASIN PAYWEIGHT 1682 DMF DWF AMF CAF OHF M1F NHF OSF DDF
 21AR O LASS 7017

Sire: **BRUIN BENZ 5361 (2008381)**
 G A R INGENUITY DDC

BRUIN 6759 FOREVER LADY 3327 OSF DDF
 BRUIN 4168 FOREVER LADY 1040

TC ABERDEEN 759 DMF AMF CAF OHF M1F NHF OSF DDF
 BENCHMARK ABERDEEN 188'12
 G A R T510 TRAVELER 264 AMF

Dam: **BENCHMARK PRINCESS 63'15 (1834845)**

G A R PROPHET A011 DDF
 BENCHMARK PRINCESS 53'13
 BENCHMARK PRINCESS 80'11

CARCASS	
EPD'S:	
MARB	+0.72
REA	+0.50
FAT	+0.02
CW	+43
ACTUAL:	
%IMF	5.04
REA	1.08
RIB FAT	0.23
LMY	62.7%

LOT 39

BENCHMARK MERCEDES 126'19

Male BFL 126G May 18, 2019 2105699

BASIN PAYWEIGHT 006S AMF CAF OHF M1F NHF DDF
 BASIN PAYWEIGHT 1682 DMF DWF AMF CAF OHF M1F NHF OSF DDF
 21AR O LASS 7017

Sire: **BRUIN BENZ 5361 (2008381)**
 G A R INGENUITY DDC

BRUIN 6759 FOREVER LADY 3327 OSF DDF
 BRUIN 4168 FOREVER LADY 1040

G A R PROPHET DMF DWF AMF CAF OHF M1F NHF OSF DDF
 G A R PROPHET A011 DDF
 G A R 1407 NEW DESIGN 3064 NHF

Dam: **BENCHMARK BLACKCAP 109'16 (1899365)**

G A R EFFICIENCY 7295 DMF AMF CAF OHF M1F NHF DDF
 BENCHMARK BLACKCAP 173'14
 AAF BLACKCAP 15F DDF

CARCASS	
EPD'S:	
MARB	+0.87
REA	+0.69
FAT	+0.019
CW	+53
ACTUAL:	
%IMF	6.35
REA	1.24
RIB FAT	0.34
LMY	61.9%

PERFORMANCE							EPD's				
AOD	BW	205D	365D	ADG	F:G	RFI	BW	WW	YW	RADG	RFI
4	87	587	1199	3.73	5.98:1	-0.18	+0.1	54	97	+0.21	+0.3307
SEPTEMBER 2020 EPD RANKING:											
Top 1% Milk				Top 10% Calving Ease				Top 10% Maternal Calving Ease			
Top 7% Marbling				Top 10% Birth Weight							

PERFORMANCE							EPD's				
AOD	BW	205D	365D	ADG	F:G	RFI	BW	WW	YW	RADG	RFI
3	92	557	1237	4.63	4.53:1	-1.61	+2.3	64	116	+0.24	+0.1102
SEPTEMBER 2020 EPD RANKING:											
Top 3% Marbling				Top 6% Weaning Weight				Top 10% Ribeye			
Top 4% Yearling Weight				Top 8% Carcass Weight				Top 15% Milk			

* Dan Skidmore owns a maternal brother to Lot 38. Note A011 on the bottom side a bull we bought from Gardiner's who sports a +1.78 marbling EPD, not many out there better.

* From an own daughter of A011, he is a marbling guru. This guy did real well on Grow Safe ranking 8th out of 68 bulls. This bull will make you some money!

LOT 40

BENCHMARK MERCEDES 130'19

Male BFL 130G May 23, 2019 2106097

BASIN PAYWEIGHT 006S AMF CAF OHF M1F NHF DDF
 BASIN PAYWEIGHT 1682 DMF DWF AMF CAF OHF M1F NHF OSF
 21AR O LASS 7017

Sire: **BRUIN BENZ 5361 (2008381)**
 G A R INGENUITY DDC

BRUIN 6759 FOREVER LADY 3327 OSF DDF
 BRUIN 4168 FOREVER LADY 1040

G A R PREDESTINED DMF AMF CAF OHF M1F NHF OSF DDC
 BENCHMARK PREDESTINED 8301 AMF DDF
 G A R T510 TRAVELER 264 AMF

Dam: **BENCHMARK BARBARA 59'14 (1809848)**

S S TRAVELER 6807 T510 DMF AMF CAF OHF M1F NHF DDF
 BENCHMARK BARBARA 9149
 BENCHMARK BARBARA 70013

PERFORMANCE							EPD's				
AOD	BW	205D	365D	ADG	F:G	RFI	BW	WW	YW	RADG	RFI
5	85	541	1204	4.88	5.16:1	+0.64	+1.1	59	110	+0.25	+0.3968
SEPTEMBER 2020 EPD RANKING:											
Top 7% Carcass Weight				Top 15% Marbling				Top 15% Weaning Weight			
Top 8% Yearling Weight				Top 15% Ribeye							

CARCASS	
EPD'S:	
MARB	+0.56
REA	+0.63
FAT	+0.004
CW	+54
ACTUAL:	
%IMF	4.69
REA	1.21
RIB FAT	0.25
LMY	63.4%

* These Benz bulls have a lot of grow and gain in them with great carcass weight and adequate marbling. Be sure to take a good look at this group.

NOW SERVING COALDALE!



1716 20th Ave, Coaldale, AB
403.345.4848 info@schwartzcoaldale.com



DINE-IN, PICK UP & DELIVERY
 The Finest Pizza, Pasta & Salads
 in Lethbridge for over 40 Years.

2013 Lethbridge
BEST OF THE BEST

Monday to Thursday
 11:00 AM to 12:00 AM

Friday to Saturday
 11:00 AM to 1:00 AM

Sunday & Holidays
 4:00 PM to 11:00 PM

403-327-1952
 www.top-pizza.com

1101 - 4th Ave. South.



REFERENCE SIRE

BENCHMARK MICAH 247'13



GENOMIC
ENHANCED
CAA-EPDs

VALUE	\$W	\$F	\$G	\$B	\$C
INDEX	+63	+58	+73	+131	+229

PERF	AOD	BW	205D	365D
	2	100	656	999

C R A BEXTOR 872 5205 608 1167526

Sire: G A R PROPHET 1694215

G A R OBJECTIVE 1885

SUMMITCREST COMPLETE 1P55

Dam: G A R COMPLETE 1381 1723491

G A R PREDESTINED 2358

B A R EXT TRAVELER 205 979739

CRA LADY JAYE 608 498 S EASY

S S OBJECTIVE T510 OT26 1179389

G A R 1407 NEW DESIGN 2232

C F RIGHT DESIGN 1802

SUMMITCREST ELBA 1M17

G A R PREDESTINED 1162499

G A R OBJECTIVE 2345

CE
+3

BW
+4.1

WW
+52

YW
+90

CW
+30

MARB
+1.50

REA
+0.41

FAT
+0.033

DOC
+22

• Micah is a bull we own with Artisan Farms & Blaine Walburger and phenotypically just maybe the best bull on the place. He is stout, deep and carries great width and we love his feet and leg structure. He came in dam and is from a heifer we purchased at Gardiner's.

• She is a dream female bred in the purple and is the dam of Benchmark Premium 2'15, the #5 bull on the Cdn. Registry, ranked for marbling. These genetics are what it is all about "Gain and Grade". At the processing plant we see it every day, those that grade and those that don't. These Micah sons will be the last at Benchmark as Micah now resides at Artisan in Ontario

• OWNED BY ARTISAN FARMS & BLAINE WALBURGER

• 4 SONS SELL

- Avg. BW: 90 lbs.
- Avg. 205D: 583 lbs.
- Avg. 365D: 1252 lbs

SEPTEMBER 2020 EPD RANKING:

Top 1% Marbling	Top 15% Docility
Top 1% Maternal Calving Ease	Top 30% Weaning Weight
Top 1% Milk	Top 35% Yearling Weight

BULLS SIRED BY BENCHMARK MICAH 247'13

LOT 41 BENCHMARK MICAH 69'19 Male BFL 69G May 05, 2019

2105638

C R A BEXTOR 872 5205 608 DMF AMF CAF OHF M1F NHF OSF DDF
G A R PROPHET DMF DWF AMF CAF OHF M1F NHF OSF DDF
G A R OBJECTIVE 1885 AMF NHF DDF
Sire: **BENCHMARK MICAH 247'13 (1766524)**
SUMMITCREST COMPLETE 1P55 DWF AMF CAF OHF NHF DDF
G A R COMPLETE 1381
G A R PREDESTINED 2358 NHF DDF

SYDGEN TRUST 6228 DMF DWF AMF CAF OHF M1F NHF OSF DDF
G A R INNOVATION 3002G
GOODE MANDATE 1751 DDF
Dam: **BENCHMARK ELBINA 38'16 (1899315)**
G A R PREDESTINED DMF AMF CAF OHF M1F NHF OSF DDF
BENCHMARK ELBINA 938
ROYAL ELBINA DRCC 2043M NHF

CARCASS	
EPD'S:	
MARB	+1.21
REA	+0.47
FAT	+0.041
CW	+30
ACTUAL:	
%IMF	6.83
REA	1.13
RIB FAT	0.58
LMY	55.1%

LOT 42 BENCHMARK MICAH 88'19 Male BFL 88G May 06, 2019

2106078

C R A BEXTOR 872 5205 608 DMF AMF CAF OHF M1F NHF OSF
G A R PROPHET DMF DWF AMF CAF OHF M1F NHF OSF DDF
G A R OBJECTIVE 1885 AMF NHF DDF
Sire: **BENCHMARK MICAH 247'13 (1766524)**
SUMMITCREST COMPLETE 1P55 DWF AMF CAF OHF NHF DDF
G A R COMPLETE 1381
G A R PREDESTINED 2358 NHF DDF

B/R NEW DESIGN 036 AMF CAF OHF M1F NHF OSF DDF
G A R NEW DESIGN 5050 DMF AMF CAF OHF M1F NHF OSF DDF
G A R PRECISION 706 AMF NHC
Dam: **BENCHMARK LUCY 9'12 (1672012)**
G A R EFFICIENCY 7295 DMF AMF CAF OHF M1F NHF DDF
BENCHMARK LUCY 0131
BENCHMARK LUCY 769

CARCASS	
EPD'S:	
MARB	+1.30
REA	+0.74
FAT	+0.007
CW	+39
ACTUAL:	
%IMF	6.67
REA	1.30
RIB FAT	0.28
LMY	64.2%

PERFORMANCE							EPD's				
AOD	BW	205D	365D	ADG	F:G	RFI	BW	WW	YW	RADG	RFI
3	87	587	1230	4.37	5.59:1	+1.54	+1.7	51	83	+0.16	+0.5071

SEPTEMBER 2020 EPD RANKING:		
Top 1% Marbling	Top 1% Maternal Calving Ease	Top 1% Milk

* From an Innovation daughter. Innovation is a very high ranking bull on the interbreed Grow Safe database for feed efficiency. These Micah sons sure do marble as will their calves.

PERFORMANCE							EPD's				
AOD	BW	205D	365D	ADG	F:G	RFI	BW	WW	YW	RADG	RFI
7	86	578	1211	4.43	5.16:1	-0.22	+2.3	50	85	+0.18	+0.4630

SEPTEMBER 2020 EPD RANKING:		
Top 1% Marbling	Top 1% Maternal Calving Ease	Top 10% Docility
Top 1% Milk	Top 6% Ribeye	

* The dam of Lot 42 is an own daughter of 5050, he is the sire of our Benchmark herd sire Baseline plus countless other valued females & males throughout the world.



LOT 42



LANE BELLEW
Agent
LJB Fuels Ltd.

☎ 403.647.3787
📠 403.492.8650
🌐 UFA.com
✉ Lane.Bellew@UFA.com

📍 704 Service Road NW
PO Box 284
Milk River, Alberta TOK 1M0

D & S INSURANCE SERVICES

JON MCKENZIE

304 - 2 STREET, P.O. BOX 357, WARNER, AB. T0K2L0
Telephone: (403) 642-2032 Fax: (403)642-2112
E-MAIL: jon@dsinsuranceservices.ca

Toll Free in Alberta: 1-888-488-0188

FOR ALL YOUR INSURANCE NEEDS
FARM • HOME • AUTO • TRAVEL • LIVESTOCK • EQUINE • HAIL

BULLS SIRED BY BENCHMARK MICAH 247'13

LOT 43 BENCHMARK MICAH 90'19 Male BFL 90G May 06, 2019

2106074

C R A BEXTOR 872 5205 608 DMF AMF CAF OHF M1F NHF OSF DDF
G A R PROPHET DMF DWF AMF CAF OHF M1F NHF OSF DDF
G A R OBJECTIVE 1885 AMF NHF DDF
Sire: **BENCHMARK MICAH 247'13 (1766524)**
SUMMITCREST COMPLETE 1P55 DWF AMF CAF OHF NHF DDF
G A R COMPLETE 1381
G A R PREDESTINED 2358 NHF DDF

B/R DESTINATION 727-928 DMF AMF CAF OHF M1F NHF OSF DDF
G A R END POINT 5122 DDF
G A R 28 AMBUSH 1949 DDF

Dam: **BENCHMARK QUEEN 166'15 (1834905)**
BENCHMARK PREDESTINED 8301 AMF DDF
BENCHMARK QUEEN 246'11
G A R RETAIL PRODUCT 2057 AMF

CARCASS	
EPD'S:	
MARB	+1.26
REA	+0.56
FAT	+0.016
CW	+44
ACTUAL:	
%IMF	6.71
REA	1.11
RIB FAT	0.40
LMY	60.2%

LOT 44 BENCHMARK MICAH 145'19 Male BFL 145G June 03, 2019

2106107

C R A BEXTOR 872 5205 608 DMF AMF CAF OHF M1F NHF OSF
G A R PROPHET DMF DWF AMF CAF OHF M1F NHF OSF DDF
G A R OBJECTIVE 1885 AMF NHF DDF
Sire: **BENCHMARK MICAH 247'13 (1766524)**
SUMMITCREST COMPLETE 1P55 DWF AMF CAF OHF NHF DDF
G A R COMPLETE 1381
G A R PREDESTINED 2358 NHF DDF

MCC DAYBREAK DMF AMF CAF OHF M1F NHF OSF DDF
G A R DAYBREAK 6860 DDC
G A R OBJECTIVE 277L AMF DDC

Dam: **BENCHMARK RITA 25'14 (1779774)**
BENCHMARK PREDESTINED 8301 AMF DDF
BENCHMARK RITA 40'112
BIG COUNTRY RITA 3P AMF

CARCASS	
EPD'S:	
MARB	+1.45
REA	+0.54
FAT	+0.014
CW	+36
ACTUAL:	
%IMF	7.21
REA	1.17
RIB FAT	0.32
LMY	60.7%

PERFORMANCE							EPD's				
AOD	BW	205D	365D	ADG	F:G	RFI	BW	WW	YW	RADG	RFI
4	90	584	1319	4.96	4.50:1	-2.09	+3.1	57	107	+0.21	+0.3748

PERFORMANCE							EPD's				
AOD	BW	205D	365D	ADG	F:G	RFI	BW	WW	YW	RADG	RFI
5	99	584	1249	4.32	5.21:1	-0.15	+4.2	54	93	+0.18	+0.3086

SEPTEMBER 2020 EPD RANKING:		
Top 1% Marbling	Top 10% Yearling Weight	Top 15% Milk
Top 1% Maternal Calving Ease	Top 15% Weaning Weight	Top 25% REA

SEPTEMBER 2020 EPD RANKING:		
Top 1% Marbling	Top 25% Weaning Weight	
Top 1% Maternal Calving Ease	Top 25% Ribeye	

• Take a good look at this guy! Ranked 6th on Grow Safe out of 68 bulls, and was 104 for weaning weight and 108 for yearling weight and check the scan data. He is great under the hide as well. Great gain and conversion here.

• The dam has son's at CJD Ranching and Rosetown Farming. Great scan on this guy.

LOT 43



Your green solution for sustainable management of organics. Pick-up & processing of offal, carcasses & deadstock.

Please call Ed @ (403) 328-1429 or send an e-mail to ed@ecbna.com

Leithbridge BIOGAS LP

REFERENCE SIRE

K C F BENNETT THEROCK A473



GENOMIC
ENHANCED
CAA-EPDs

VALUE	\$W	\$F	\$G	\$B	\$C
INDEX	+70	+101	+76	+177	+284
RANKING	20%	15%	3%	5%	4%
PERF	AOD	BW	205D	365D	
	4	79	742	1420	

NICHOLS EXTRA K205

Sire: K C F BENNETT SOUTHSIDE

K C F MISS 208 S11

GAR-EGL PROTEGE 1410237

Dam: K C F MISS PROTEGE W148

BREELA OF CONANGA 3991

NICHOLS EXTRA H6 1142711

NICHOLS BLACK HEIRESS F346

BON VIEW NEW DESIGN 208

K C F MISS 338 P14

RITO 112 OF 2536 RITO 616

L B 6807 ISABEL 339

C A FUTURE DIRECTION 5321

BRESHA OF CONANGA 1251

CE
+9

BW
+2.0

WW
+78

YW
+144

CW
+64

MARB
+1.17

REA
+0.59

FAT
+0.014

DOC
+26

A little different pedigree on this Alta Genetics bull. He brings decent calving ease with a great spread to a yearling weight EPD of plus 144. He has been used extensively in the business with his son's finding their way into AI use throughout North America. His calves come easy and they grow, gain and carry the carcass end quality merit that we demand.

OWNED BY ALTA GENETICS & KNOLLCREST FARM

4 SONS SELL

- Avg. BW: 80 lbs.
- Avg. 205D: 567 lbs.
- Avg. 365D: 1294 lbs

SEPTEMBER 2020 EPD RANKING:

Top 1% Weaning Weight	Top 5% Docility
Top 1% Yearling Weight	Top 10% Calving Ease
Top 1% Carcass Weight	Top 10% Maternal Calving Ease
Top 1% Marbling	Top 20% Ribeye

BULLS SIRED BY K C F BENNETT THEROCK A473

LOT 45

BENCHMARK THEROCK 5'19

Male LAA 5G April 03, 2019

2105440

NICHOLS EXTRA K205 AMF CAF OHF NHF DDF
K C F BENNETT SOUTHSIDE DMF AMF CAF M1F NHF DDF
K C F MISS 208 S11 CAF
Sire: K C F BENNETT THEROCK A473
GAR-EGL PROTEGE DMF AMF CAF OHF M1F NHF OSF DDF
K C F MISS PROTEGE W148 NHF
BREELA OF CONANGA 3991 AMF DDF

B/R DESTINATION 727-928 DMF AMF CAF OHF M1F NHF OSF DDF
G A R END POINT 5122 DDF
G A R 28 AMBUSH 1949 DDF
Dam: BENCHMARK LAVENDER LADY 132'17 (1964784)
G A R DAYBREAK 6860 DDC
BENCHMARK LAVENDER LADY 14'14 DDC
BENCHMARK LAVENDER LADY 55'12

CARCASS	
EPD'S:	
MARB	+1.20
REA	+0.87
FAT	-0.016
CW	+51
ACTUAL:	
%IMF	6.44
REA	1.13
RIB FAT	0.29
LMY	63.3%

LOT 46

BENCHMARK THEROCK 11'19

Male BFL 11G April 08, 2019

2105614

NICHOLS EXTRA K205 AMF CAF OHF NHF DDF
K C F BENNETT SOUTHSIDE DMF AMF CAF M1F NHF DDF
K C F MISS 208 S11 CAF
Sire: K C F BENNETT THEROCK A473
GAR-EGL PROTEGE DMF AMF CAF OHF M1F NHF OSF DDF
K C F MISS PROTEGE W148 NHF
BREELA OF CONANGA 3991 AMF DDF

G A R PROPHET DMF DWF AMF CAF OHF M1F NHF OSF DDF
G A R PROPHET A011 DDF
G A R 1407 NEW DESIGN 3064 NHF
Dam: BENCHMARK MAIDEN 8'17 DDF (1957868)
G A R END POINT 5122 DDF
BENCHMARK MAIDEN 115'15
BENCHMARK MAIDEN 239'11

CARCASS	
EPD'S:	
MARB	+1.11
REA	+0.44
FAT	+0.006
CW	+45
ACTUAL:	
%IMF	6.55
REA	1.11
RIB FAT	0.34
LMY	62.6%

PERFORMANCE							EPD's				
AOD	BW	205D	365D	ADG	F:G	RFI	BW	WW	YW	RADG	RFI
2	90	576	1259	4.41	5.46:1	+0.22	+3.5	71	124	+0.24	+0.4630
SEPTEMBER 2020 EPD RANKING:											
Top 1% Weaning Weight				Top 1% Marbling				Top 6% Fat			
Top 1% Yearling Weight				Top 1% Ribeye				Top 10% Carcass Weight			

PERFORMANCE							EPD's				
AOD	BW	205D	365D	ADG	F:G	RFI	BW	WW	YW	RADG	RFI
2	85	618	1365	5.40	5.0:1	N/A	+2.7	62	111	+0.19	N/A
SEPTEMBER 2020 EPD RANKING:											
Top 1% Marbling				Top 8% Calving Ease				Top 20% Carcass Weight			
Top 2% Docility				Top 9% Weaning Weight				Top 20% Maternal Calving Ease			
Top 8% Yearling Weight											

• From a two year old heifer, this guy numbers up real well. His calves will result in 24lbs more at weaning and 41lbs at a year more than the average Angus bull and the finished product will yield and grade.

• Wouldn't you like to feed a pen of steers that gained 5.40lbs per day and converted at 5.0:1. Wow! Plus graded choice with a good percentage Prime!!

LOT 47

BENCHMARK THEROCK 13'19

Male BFL 13G April 10, 2019

2105617

NICHOLS EXTRA K205 AMF CAF OHF NHF DDF
K C F BENNETT SOUTHSIDE DMF AMF CAF M1F NHF DDF
K C F MISS 208 S11 CAF
Sire: K C F BENNETT THEROCK A473
GAR-EGL PROTEGE DMF AMF CAF OHF M1F NHF OSF DDF
K C F MISS PROTEGE W148 NHF
BREELA OF CONANGA 3991 AMF DDF

G A R PROPHET DMF DWF AMF CAF OHF M1F NHF OSF DDF
BENCHMARKPROPHET 69'15
BENCHMARK PRIDE 130'13 DDF
Dam: BENCHMARK LUCY 68'17 (1964415)
G A R EFFICIENCY 7295 DMF AMF CAF OHF M1F NHF DDF
BENCHMARK LUCY 0131
BENCHMARK LUCY 769

CARCASS	
EPD'S:	
MARB	+0.92
REA	+0.66
FAT	-0.013
CW	+41
ACTUAL:	
%IMF	6.06
REA	1.16
RIB FAT	0.16
LMY	66.8%

PERFORMANCE							EPD's				
AOD	BW	205D	365D	ADG	F:G	RFI	BW	WW	YW	RADG	RFI
2	65	499	1235	4.89	4.84:1	+0.55	-2.1	55	103	+0.23	+0.5071
SEPTEMBER 2020 EPD RANKING:											
Top 1% Calving Ease				Top 4% Maternal Calving Ease				Top 10% Ribeye			
Top 1% Birth Weight				Top 8% Fat				Top 15% Yearling Weight			
Top 2% Marbling											

• A couple of three-quarter brothers in Lot 47 & 48 both with lots to offer. Heifer bull in Lot 47 for sure and note the LMY on this guy.



PEDIGREED SEED VARIETIES

- **Spring Triticale:** Tyndal, AAC Delight, Luoma, Metzger, Bobcat
- **Winter Triticale:** Luoma, Metzger, Bobcat
- **Oats:** AC Morgan, ORE 3542M
- **Barley:** Austenson
- **Winter Wheat:** AC Emerson, AAC Wildfire
- **Peas:** Forage Peas, Winter Peas
- **Rye:** OP Fall Rye & Hybrid
- **C4 Grasses:** Grazing Sorghum, BMR Silage Sorghum, Pearl, Manta, Siberian & Foxtail Millet
- **Cover Crops:** Brassicas, Turnip, Radish, Clover, Hairy Vetch and other cover crops available

BLENDING/BAGGING OPTIONS AVAILABLE



DEPENDABLE SUPPLY | TRITICALE SPECIALISTS | NO-HASSLE SALES

SALES@CORNSSEEDS.COM
GRASSY LAKE, ALBERTA
CORNSSEEDS.COM

CALL TO BOOK
YOUR FORAGE SEEDS
BRYAN CORNS | 403-360-9500
WHITNEY CORNS | 403-360-0833

LOT 46



BULLS SIRED BY K C F BENNETT THEROCK A473

LOT 48

BENCHMARK THEROCK 22'19

Male BFL 22G April 14, 2019 2105623

NICHOLS EXTRA K205 AMF CAF OHF NHF DDF
K C F BENNETT SOUTHSIDE DMF AMF CAF M1F NHF DDF
K C F MISS 208 S11 CAF

Sire: K C F BENNETT THEROCK A473

GAR-EGL PROTEGE DMF AMF CAF OHF M1F NHF OSF DDF
K C F MISS PROTEGE W148 NHF
BREELA OF CONANGA 3991 AMF DDF

G A R PROPHET DMF DWF AMF CAF OHF M1F NHF OSF DDF
BENCHMARKPROPHET 69'15
BENCHMARK PRIDE 130'13 DDF

Dam: BENCHMARK EVERELDA 102'17 (1964436)


G A R RETAIL PRODUCT DMF AMF CAF OHF M1F NHF OSF DDF
BENCHMARK EVERELDA ENTENSE 829
EVERELDA ENTENSE DRLL 3089N

CARCASS	
EPD'S:	
MARB	+0.98
REA	+0.44
FAT	+0.019
CW	+47
ACTUAL:	
%IMF	6.34
REA	1.02
RIB FAT	0.34
LMY	61.2%

PERFORMANCE							EPD's				
AOD	BW	205D	365D	ADG	F:G	RFI	BW	WW	YW	RADG	RFI
2	82	575	1315	5.42	4.78:1	+1.70	+0.3	63	118	+0.22	+0.6393


SEPTEMBER 2020 EPD RANKING:		
Top 2% Marbling	Top 8% Weaning Weight	Top 15% Carcass Weight
Top 3% Calving Ease	Top 10% Maternal Calving Ease	Top 15% Birth Weight
Top 4% Yearling Weight	Top 15% Milk	

• Again from a two year old featuring Prophet, Daybreak, Retail Product and New Design 1407. Terrific gain and feed conversion on Grow Safe test.





RANCH-WORTHY POWER AT A PRICE YOU'LL LIKE.

Power. Performance. Comfort. Without the cost. That's the NEW Kubota M7-2 Rancher Edition. Built to handle the toughest jobs, the M7-2's load sensing (CCLS) hydraulics allow you to run a variety of implements and gives you wide-ranging versatility to handle all your jobs. Work comfortably from the roomy cab with a built-in radio and comfortable seats. Plus, you can add a front loader with an impressive lift capacity of 5776 lbs. The M7-2 certainly earns its "Rancher" title.



newwaykubota.com
Lethbridge - (403) 328-3777
Brooks - (403) 362-4087



kubota.ca | 

BULL SIRED BY 44 ARSENAL 4W07

LOT 49

BENCHMARK ARSENAL 36'19

Male BFL 36G April 20, 2019 2105630

CARCASS	
EPD'S:	
MARB	+0.94
REA	+0.62
FAT	+0.000
CW	+31
ACTUAL:	
%IMF	5.92
REA	1.13
RIB FAT	0.23
LMY	63%

GAR-EGL PROTEGE DMF AMF CAF OHF M1F NHF OSF DDF
 BALDRIDGE WAYLON W34 AMF CAF NHF DDF
 BALDRIDGE BLACKCAP T163
Sire: 44 ARSENAL 4W07
 G A R NEW DESIGN 5050 DMF AMF CAF OHF M1F NHF OSF DDC
 DZ ND 5050 OF15
 DZ TOTAL 8T05

G A R PROPHET DMF DWF AMF CAF OHF M1F NHF OSF DDF
 BENCHMARKPROPHET 69'15
 BENCHMARK PRIDE 130'13 DDF
Dam: BENCHMARK BEAUTY 122'17 (1964447)
 BENCHMARK NEXT STEP 8289
 BENCHMARK BEAUTY 229'11
 BENCHMARK BEAUTY 9254

PERFORMANCE							EPD's				
AOD	BW	205D	365D	ADG	F:G	RFI	BW	WW	YW	RADG	RFI
2	80	454	1124	4.19	N/A	N/A	+1.8	53	105	+0.29	N/A

SEPTEMBER 2020 EPD RANKING:		
Top 2% Marbling	Top 10% Yearling Weight	Top 15% Ribeye
Top 6% Residual ADG		

* Lot 49 was not part of the Grow Safe group but in his group of 22 bulls he ratioed 112 for YW. His %IMF ratio within that group was 122.

LOT 49



44 ARSENAL 4W07

REFERENCE SIRE

RED DUNN BETTER A500



GENOMIC
ENHANCED
CAA-EPDs

VALUE	HERD BUILDER	GRID MASTER
INDEX	199	51
RANKING	9%	10%

PERF	AOD	BW	205D	365D
	9	89	724	1224

RED BECKTON NEBULA P P707

Sire: RED BROWN ALLIANCE X7795

RED C-BAR & BROWN ABIGRACET714

RED LCC NEW CHAPTER A705L

Dam: RED LSF SWEETNESS J1358 P4085

RED LSF SWEETNESS J1358

RED BECKTON NEBULA M045 15826690

RED BECKTON LANA M809 EP RA855048

RED LIC MISSION STATEMENT P27 1318819

RED BROWN MS ABIGRACE L7730 RA794710

RED BFCK CHEROKEE CNYN 4912 1038594

RED MISS LL ROB LOW 929 RA6555053

RED LCC HEAVEN OR BUST 1000B 788585

RED LIRA NON HEAV G1373 RA560540

CE
+3

BW
+2.1

WW
+51

YW
+85

CW
+35

MARB
+0.49

REA
+0.76

FAT
-0.027

DOC
+12

• The dam of Dunn Better A500 is none other than the dam of LSF JBOB Expectation 60345 known as the EPD Monster. The sire of Dunn Better, Brown Alliance X7795 is a full brother to Accelerated Genetics roster bull Brown Synergy and a full sister to the dam of Brown Complete a highly touted Red Angus bull showing a Herdbuilder score of 194.

• Note the Abigrace L7730 the high-earning female in Red Angus history. She appears in the lineage of our herdsire Commitment as well.

• His calves are deep & thick and very efficient on Grow Safe.

• OWNED WITH DOUBLE EAGLE RANCH

• 3 SONS SELL

- Avg. BW: 90 lbs.
- Avg. 205D: 598 lbs.
- Avg. 365D: 1308 lbs

SEPTEMBER 2020 EPD RANKING:

Top 1% Ribeye	Top 7% Yearling Weight
Top 2% Fat	Top 8% Residual ADG
Top 6% Marbling	Top 10% Carcass Weight
Top 6% Weaning Weight	

BULLS SIRED BY RED DUNN BETTER A500

LOT 50

RED BENCHMARK BETTER YET 17'19

Male BFR 17G April 22, 2019 2105179

RED BECKTON NEBULA P P707 OSF
 RED BROWN ALLIANCE X7795 NHF OSF MAF
 RED C-BAR & BROWN ABIGRACET714 OSF
Sire: RED DUNN BETTER A500 (1833407)
 RED LCC NEW CHAPTER A705L OSF
 RED LSF SWEETNESS J1358 P4085 NHF OSF MAF
 RED LSF SWEETNESS J1358

RED 5L NORSEMAN EXPRESS
 RED 5L TRAVLIN EXP 1892-6295 OSF MAF
 5L SUNSHINE 699-1892 OSF
Dam: RED BENCHMARK BURGESS 020 (1563890)
 RED LAZY MC PRECISION 20N NHF
 RED BENCHMARK BURGESS 675
 BENCHMARK BURGESS 207'97

CARCASS	
EPD'S:	
MARB	+0.27
REA	+0.70
FAT	-0.026
CW	+41
ACTUAL:	
%IMF	3.51
REA	1.05
RIB FAT	0.22
LMY	65.2%

LOT 51

RED BENCHMARK BETTER YET 36'19

Male BFR 36G April 30, 2019 2105192

RED BECKTON NEBULA P P707 OSF
 RED BROWN ALLIANCE X7795 NHF OSF MAF
 RED C-BAR & BROWN ABIGRACET714 OSF
Sire: RED DUNN BETTER A500 (1833407)
 RED LCC NEW CHAPTER A705L OSF
 RED LSF SWEETNESS J1358 P4085 NHF OSF MAF
 RED LSF SWEETNESS J1358

RED BASIN EXT 5233 OSF MAF
 RED BASIN EXT 45T5 AMF NHF OSF MAF
 BASIN ROSE 710P DMF AMF NHF OSF
Dam: RED BENCHMARK ESTY 53'14 (1777839)
 RED 5L TRAVLIN EXP 1892-6295 OSF MAF
 RED BENCHMARK ESTY 030
 RED ESTY OF BENCHMARK 620

CARCASS	
EPD'S:	
MARB	+0.39
REA	+0.85
FAT	+0.003
CW	+33
ACTUAL:	
%IMF	3.23
REA	1.38
RIB FAT	0.40
LMY	62.7%

PERFORMANCE							EPD's				
AOD	BW	205D	365D	ADG	F:G	RFI	BW	WW	YW	RADG	RFI
9	88	621	1331	5.09	4.96:1	-0.44	+1.8	48	80	+0.21	+0.0661

SEPTEMBER 2020 EPD RANKING:		
Top 2% Ribeye	Top 4% Carcass Weight	Top 10% Yearling Weight
Top 3% Fat	Top 10% Weaning Weight	

PERFORMANCE							EPD's				
AOD	BW	205D	365D	ADG	F:G	RFI	BW	WW	YW	RADG	RFI
5	89	590	1261	5.09	4.54:1	-0.73	+2.1	50	83	+0.22	-0.1764

SEPTEMBER 2020 EPD RANKING:		
Top 1% Ribeye	Top 9% Yearling Weight	Top 15% Marbling
Top 8% Weaning Weight	Top 10% Carcass Weight	

Burgess 020 calves like clock work, never skipping a beat. She has sons at Shawn Rodgers, Eweleme Colony, Egg Lake Range with two daughters working at Benchmark.

The dam of Lot 51 is a paternal sister to Benchmark Better Beef the Grand Champion at the Denver Stock Show. Be sure to check the gain and feed to gain on the red bulls. Lot 51 scanned a 17.2 sq in ribeye at 380 days of age.

LOT 52

RED BENCHMARK BETTER YET 44'19

Male BFR 44G May 05, 2019 2105203

RED BECKTON NEBULA P P707 OSF
 RED BROWN ALLIANCE X7795 NHF OSF MAF
 RED C-BAR & BROWN ABIGRACET714 OSF
Sire: RED DUNN BETTER A500 (1833407)
 RED LCC NEW CHAPTER A705L OSF
 RED LSF SWEETNESS J1358 P4085 NHF OSF MAF
 RED LSF SWEETNESS J1358

RED 5L NORSEMAN EXPRESS
 RED 5L TRAVLIN EXP 1892-6295 OSF MAF
 5L SUNSHINE 699-1892 OSF
Dam: RED BENCHMARK CARMELLA 933 (1500188)
 RED BAKERS CENTURY
 RED GET-A-LONG CARMELLA 298
 GET-A-LONG CARMELLA 164

PERFORMANCE							EPD's				
AOD	BW	205D	365D	ADG	F:G	RFI	BW	WW	YW	RADG	RFI
10	94	584	1333	5.14	4.26:1	-3.15	+1.9	49	87	+0.25	-0.5071

SEPTEMBER 2020 EPD RANKING:		
Top 5% Residual ADG	Top 9% Weaning Weight	Top 10% Ribeye
Top 6% Yearling Weight	Top 9% Carcass Weight	Top 15% Fat

Three Quarter brother to Lot 50. Note the Get A Long cow, she's from Dennis Ericson a few years ago.

CARCASS	
EPD'S:	
MARB	+0.27
REA	+0.53
FAT	-0.010
CW	+36
ACTUAL:	
%IMF	3.78
REA	1.05
RIB FAT	0.29
LMY	62.5%



LOT 52

REFERENCE SIRE

RED LAUBACH DEEP END 7047



GENOMIC
ENHANCED
CAA-EPDs

VALUE INDEX	HERD BUILDER 169	GRID MASTER 53
RANKING	43%	1%

PERF	AOD	BW	205D	365D
	8	85	687	1121

RED BIEBER ROLLIN DEEP Y118

Sire: RED BIEBER DEEP END B597

RED BIEBER LAURA 158W RA1311673

RED HXC CONQUEST 4405P

Dam: RED LAUBACH JODI 9018

RED WHY 8000 WILLOW 7033

RED BIEBER ROOSEVELT W384

RED BIEBER TILLY 399W

RED LJC MISSION STATEMENT P27

RED BASIN LAURA 5301

RED BECKTON JULIAN GG B571

RED HXC ELLIE MAY MA638

RED BIEBER BOONE 8000

RED WILLOW BONNIEBELL 304

CE
+11

BW
-0.5

WW
+63

YW
+113

CW
+47

MARB
+0.31

REA
+0.53

FAT
-0.018

DOC
+19

• Always looking for the next herd bull, we were attracted to the Laubach Family at Big Timber, Montana. Deep End 7047 was the high selling bull that day. His calves come easy, have a bit more frame, gain real well & scan with good marbling and amazing ribeye. We lost Deep End 7047 early this breeding season due to an injury, so help yourself to these fresh genetics from Benchmark.

• Pictured above is Sire of 7047, Red Bieber Deep End B597.

SEPTEMBER 2020 EPD RANKING:

Top 1% Weaning Weight	Top 9% Fat
Top 1% Yearling Weight	Top 10% Ribeye
Top 1% Carcass Weight	Top 10% Docility
Top 1% Residual ADG	Top 10% Maternal Calving Ease
Top 6% Calving Ease	

• 5 SONS SELL

- Avg. BW: 87 lbs.
- Avg. 205D: 595 lbs.
- Avg. 365D: 1271 lbs

BULLS SIRED BY RED LAUBACH DEEP END 7047

LOT 53

RED BENCHMARK BIG TIMBER 18'19

Male BFR 18G April 23, 2019 2105180

RED BIEBER ROLLIN DEEP Y118 AMF CAF NHF OSF MAF
 RED BIEBER DEEP END B597 AMF NHF OSF MAF DDF
 RED BIEBER LAURA 158W AMF NHF OSF
Sire: RED LAUBACH DEEP END 7047 (2024585)
 RED HXC CONQUEST 4405P OSF MAF
 RED LAUBACH JODI 9018
 RED WHY 8000 WILLOW 7033

RED BROWN ALLIANCE X7795 NHF OSF MAF
 RED DUNN BETTER A500
 RED LSF SWEETNESS J1358 P4085 NHF OSF MAF
Dam: RED BENCHMARK LAKIMA 82'16 (1898585)
 RED BADLANDS NET WORTH 23U OSF MAF
 RED BENCHMARK LAKIMA 14'11
 RED BENCHMARK LAKIMA 95

CARCASS	
EPD'S:	
MARB	+0.48
REA	+0.53
FAT	+0.002
CW	+37
ACTUAL:	
%IMF	4.69
REA	1.16
RIB FAT	0.33
LMY	62.5%

LOT 54

RED BENCHMARK BIG TIMBER 25'19

Male BFR 25G April 27, 2019 2105186

RED BIEBER ROLLIN DEEP Y118 AMF CAF NHF OSF MAF
 RED BIEBER DEEP END B597 AMF NHF OSF MAF DDF
 RED BIEBER LAURA 158W AMF NHF OSF
Sire: RED LAUBACH DEEP END 7047 (2024585)
 RED HXC CONQUEST 4405P OSF MAF
 RED LAUBACH JODI 9018
 RED WHY 8000 WILLOW 7033

RED BROWN ALLIANCE X7795 NHF OSF MAF
 RED DUNN BETTER A500
 RED LSF SWEETNESS J1358 P4085 NHF OSF MAF
Dam: RED BENCHMARK ESTY 5'15 (1834125)
 RED 5L TRAVLIN EXP 1892-6295 OSF MAF
 RED ESTY OF BENCHMARK 974
 RED ESTY OF BENCHMARK 620

CARCASS	
EPD'S:	
MARB	+0.46
REA	+0.87
FAT	-0.028
CW	+28
ACTUAL:	
%IMF	5.23
REA	1.17
RIB FAT	0.38
LMY	61.5%

PERFORMANCE							EPD's				
AOD	BW	205D	365D	ADG	F:G	RFI	BW	WW	YW	RADG	RFI
3	75	605	1253	4.72	5.41:1	+1.76	-0.2	55	88	+0.22	+0.1102

SEPTEMBER 2020 EPD RANKING:		
Top 2% Weaning Weight	Top 8% Carcass Weight	Top 10% Calving Ease
Top 5% Yearling Weight	Top 10% Ribeye	Top 15% Residual ADG
Top 7% Marbling		

* Do note that Lakima 95 by Basin EXT 45T5 is a Premium dam as designated by the Association as is Lakima 14'11. This guy checks all the boxes as noted above.

PERFORMANCE							EPD's				
AOD	BW	205D	365D	ADG	F:G	RFI	BW	WW	YW	RADG	RFI
4	96	628	1293	4.39	5.07:1	-3.00	+2.8	56	86	+0.19	-0.4189

SEPTEMBER 2020 EPD RANKING:		
Top 1% Ribeye	Top 2% Fat	Top 8% Marbling
Top 2% Weaning Weight	Top 6% Yearling Weight	

* Esty 5'15 had a son sell to Armstrong Ranches in Sale XXII and brings a real performance bull to Sale XXIV. Nice %IMF scan on Lot 55.

LOT 55

RED BENCHMARK BIG TIMBER 28'19

Male BFR 28G April 28, 2019 2105190

RED BIEBER ROLLIN DEEP Y118 AMF CAF NHF OSF MAF
 RED BIEBER DEEP END B597 AMF NHF OSF MAF DDF
 RED BIEBER LAURA 158W AMF NHF OSF
Sire: RED LAUBACH DEEP END 7047 (2024585)
 RED HXC CONQUEST 4405P OSF MAF
 RED LAUBACH JODI 9018
 RED WHY 8000 WILLOW 7033

RED BASIN EXT 5233 OSF MAF
 RED BASIN EXT 45T5 AMF NHF OSF MAF
 BASIN ROSE 710P DMF AMF NHF OSF
Dam: RED BENCHMARK BURGESS 47'13 (1731156)
 RED 5L TRAVLIN EXP 1892-6295 OSF MAF
 RED BENCHMARK BURGESS 020
 RED BENCHMARK BURGESS 675

PERFORMANCE							EPD's				
AOD	BW	205D	365D	ADG	F:G	RFI	BW	WW	YW	RADG	RFI
6	95	595	1238	3.92	6.12:1	-1.19	+2.0	45	74	+0.20	-0.0661

SEPTEMBER 2020 EPD RANKING:		
Top 3% Marbling	Top 10% Ribeye	Top 20% Yearling Weight
Top 8% Fat	Top 15% Weaning Weight	

* Burgess 47'13 is a paternal sister to the Denver Grand Champion Benchmark Better Beef. Note that 5L Travlin Exp is double bred Sitz Traveler 8180. Lot 56 ranked 5th on the Grow Safe test for RFI.

CARCASS	
EPD'S:	
MARB	+0.58
REA	+0.53
FAT	-0.019
CW	+25
ACTUAL:	
%IMF	4.75
REA	1.08
RIB FAT	0.34
LMY	61.4%



BULLS SIRED BY RED LAUBACH DEEP END 7047

LOT 56

RED BENCHMARK BIG TIMBER 37'19

Male BFR 37G April 30, 2019 2105195

RED BIEBER ROLLIN DEEP Y118 AMF CAF NHF OSF MAF
 RED BIEBER DEEP END B597 AMF NHF OSF MAF DDF
 RED BIEBER LAURA 158W AMF NHF OSF
Sire: RED LAUBACH DEEP END 7047 (2024585)
 RED HXC CONQUEST 4405P OSF MAF
 RED LAUBACH JODI 9018
 RED WHY 8000 WILLOW 7033

RED LJC LANCER 806 OSF
 RED LJC MISSION STATEMENT P27 OSF MAF
 RED LJC HANNAH 106 OSF
Dam: RED BENCHMARK SUNFLOWER 22'11 (1618199)
 RED CHAMPLAIN SERENADE 2513P OSF MAF
 RED BENCHMARK SUNFLOWER 8118
 RED MEADOW CK MDRY ABEL 30L

CARCASS	
EPD'S:	
MARB	+0.16
REA	+0.82
FAT	-0.031
CW	+60
ACTUAL:	
%IMF	3.45
REA	1.17
RIB FAT	0.23
LMY	66.6%

LOT 57

RED BENCHMARK BIG TIMBER 39'19

Male BFR 39G May 01, 2019 2105198

RED BIEBER ROLLIN DEEP Y118 AMF CAF NHF OSF MAF
 RED BIEBER DEEP END B597 AMF NHF OSF MAF DDF
 RED BIEBER LAURA 158W AMF NHF OSF
Sire: RED LAUBACH DEEP END 7047 (2024585)
 RED HXC CONQUEST 4405P OSF MAF
 RED LAUBACH JODI 9018
 RED WHY 8000 WILLOW 7033

RED BROWN COMMITMENT S7206 OSF MAF
 RED LSF RAB COMMITMENT 2792Z
 RED BROWN MS MAKIN HAY W7901 OSF
Dam: RED BENCHMARK DURUBA 46'14 (1777832)
 RED LORENZEN COMMITMENT 0611
 RED BENCHMARK DURUBA 28'12
 RED BENCHMARK DURUBA 010

CARCASS	
EPD'S:	
MARB	+0.57
REA	+0.26
FAT	+0.028
CW	+14
ACTUAL:	
%IMF	5.75
REA	1.09
RIB FAT	0.50
LMY	56.1%

PERFORMANCE							EPD's				
AOD	BW	205D	365D	ADG	F:G	RFI	BW	WW	YW	RADG	RFI
8	99	594	1398	6.24	4.46:1	+2.73	+2.0	61	114	+0.29	+0.2646

SEPTEMBER 2020 EPD RANKING:		
Top 1% Weaning Weight	Top 1% Ribeye	Top 1% Residual ADG
Top 1% Yearling Weight	Top 1% Fat	Top 5% Docility
Top 1% Carcass Weight		

PERFORMANCE							EPD's				
AOD	BW	205D	365D	ADG	F:G	RFI	BW	WW	YW	RADG	RFI
5	69	552	1175	4.25	5.56:1	+0.57	-2.0	47	74	+0.16	+0.1764

SEPTEMBER 2020 EPD RANKING:		
Top 3% Marbling	Top 4% Calving Ease	Top 10% Weaning Weight
Top 3% Maternal Calving Ease	Top 7% Birth Weight	Top 20% Yearling Weight

* This isn't a typo. ADG was 6.24 as measured by Grow Safe with a F:G of 4.46 to 1. WOW! He scanned a 16.3 sq in ribeye with a LMY of 66.6%. If you are looking for a bull to add pounds & muscle to your calf crop, look no further.

* Lot 57 came light at birth but yet ratioed 102 at weaning and gained 41/4 lbs per day on test, scanning a 5.57% IMF.

LOT 56





403 223-9654

94402 46 Ave, Taber

Sales 
 Parts 
 Service 



2020 Ford Ranger



Munton & Michaelis
 Professional Corporation

Chartered Professional Accountants

REFERENCE SIRE

RED BROWN BLW FANTASTIC C5959



GENOMIC
ENHANCED
CAA-EPDs

VALUE INDEX	HERD BUILDER 177	GRID MASTER 54
RANKING	30%	1%

PERF	AOD	BW	205D	365D
	ET	68	435	990

RED LJC MISSION STATEMENT P27

Sire: RED BROWN PHENOMENAL Z7310

RED BROWN BLUE MOON U7791

RED BECKTON NEBULA P P707

Dam: RED BROWN MS P707 Y6648

RED BROWN MS JULIAN W6579

RED LJC LANCER 806 RA607513 OSF

RED LJC HANNAH 106 RA780783 OSF

RAB-EGL BLUE MOON 4407M

RED BROWN MS MONU P7930

RED BECKTON NEBULA M045

RED BECKTON LANA M809 EP

RED BECKTON JULIAN GG B571

RED BROWN MS L806 S6944

CE
+18

BW
-4.5

WW
+38

YW
+80

CW
+31

MARB
+0.48

REA
+0.54

FAT
+0.007

DOC
+9

• Fantastic is an Origen bull that commanded \$100,000 at the 2017 RA Brown Ranch spring sale. It has been said that “no other calving ease bull delivers this much style, balance and feed efficiency.” Along with ample growth he brings end product merit to the table.

• OWNED BY RA BROWN RANCH AND B&L RED ANGUS

• **3 SONS SELL**

• Avg. BW: 77 lbs.

• Avg. 205D: 542 lbs.

• Avg. 365D: 1158 lbs

SEPTEMBER 2020 EPD RANKING:

Top 1% Calving Ease	Top 7% Marbling
Top 1% Birth Weight	Top 10% Ribeye
Top 1% Residual ADG	Top 10% Yearling Weight
Top 1% Maternal Calving Ease	Top 15% Carcass Weight

RED BROWN BLW FANTASTIC C5959

LOT 58

RED BENCHMARK FANTASTIC 2'19

Male BFR 2G March 31, 2019 2105166

RED LJC MISSION STATEMENT P27 OSF MAF
 RED BROWN PHENOMENAL Z7310 AMF CAF NHF OSF MAF DDF
 RED BROWN BLUE MOON U7791 OSF
Sire: RED BROWN BLW FANTASTIC C5959
 RED BECKTON NEBULA P P707 OSF
 RED BROWN MS P707 Y6648
 RED BROWN MS JULIAN W6579 OSF

RED LSF MEW GAME CHANGER 1613Y OSF
 RED BENCHMARK TRANSITION 10'14 DMF AMF CAF NHF OSF DDF
 RED BENCHMARK LANA 60'11
Dam: RED BENCHMARK VIRGINIA 63'17 (1961754)
 RED BASIN EXT 45T5 AMF NHF OSF MAF
 RED BENCHMARKVIRGINIADOLL36'11
 RED BENCHMARK VIRGINIADOLL 848

CARCASS	
EPD'S:	
MARB	+0.48
REA	+0.22
FAT	+0.033
CW	+15
ACTUAL:	
%IMF	4.32
REA	1.16
RIB FAT	0.34
LMY	61.5%

LOT 59

RED BENCHMARK FANTASTIC 4'19

Male BFR 4G April 02, 2019 2105167

RED LJC MISSION STATEMENT P27 OSF MAF
 RED BROWN PHENOMENAL Z7310 AMF CAF NHF OSF MAF DDF
 RED BROWN BLUE MOON U7791 OSF
Sire: RED BROWN BLW FANTASTIC C5959
 RED BECKTON NEBULA P P707 OSF
 RED BROWN MS P707 Y6648
 RED BROWN MS JULIAN W6579 OSF

RED LSF MEW GAME CHANGER 1613Y OSF
 RED BENCHMARK TRANSITION 10'14 DMF AMF CAF NHF OSF DDF
 RED BENCHMARK LANA 60'11
Dam: RED BENCHMARK LULANNA 52'17 (1961747)
 RED BADLANDS NET WORTH 23U OSF MAF
 RED BENCHMARK LULANNA 6'11
 RED LULANNA OF BENCHMARK 8114

CARCASS	
EPD'S:	
MARB	+0.51
REA	+0.24
FAT	+0.017
CW	+21
ACTUAL:	
%IMF	5.24
REA	1.05
RIB FAT	0.27
LMY	63.3%

PERFORMANCE							EPD's				
AOD	BW	205D	365D	ADG	F:G	RFI	BW	WW	YW	RADG	RFI
2	69	517	1169	3.79	6.20:1	+1.06	-2.1	37	71	+0.23	+0.5732

SEPTEMBER 2020 EPD RANKING:		
Top 1% Calving Ease	Top 7% Birth Weight	Top 10% Residual ADG
Top 3% Maternal Calving Ease	Top 7%Marbling	

PERFORMANCE							EPD's				
AOD	BW	205D	365D	ADG	F:G	RFI	BW	WW	YW	RADG	RFI
2	72	545	1283	4.98	5.16:1	+1.57	-0.2	43	80	+0.24	+0.5952

SEPTEMBER 2020 EPD RANKING:		
Top 5% Marbling	Top 9% Yearling Weight	Top 10% Maternal Calving Ease
Top 8% Residual ADG	Top 10% Calving Ease	

• The two year old dam is by the Semex roster bull Transition tracing to an "Elite" Rodgers Red Angus female. And do note 45T5 the sire of the Denver Champion.

• Three Quarter brother to Lot 58. Both qualifying as heifer bulls. Transition left some very useful females that bred early, calved without problems and mothered & milked well. You will like this bull, he really looks the part.

LOT 60

RED BENCHMARK FANTASTIC 7'19

Male BFR 7G April 09, 2019 2105170

RED LJC MISSION STATEMENT P27 OSF MAF
 RED BROWN PHENOMENAL Z7310 AMF CAF NHF OSF MAF DDF
 RED BROWN BLUE MOON U7791 OSF
Sire: RED BROWN BLW FANTASTIC C5959
 RED BECKTON NEBULA P P707 OSF
 RED BROWN MS P707 Y6648
 RED BROWN MS JULIAN W6579 OSF

RED BROWN COMMITMENT S7206 OSF MAF
 RED LSF RAB COMMITMENT 2792Z
 RED BROWN MS MAKIN HAY W7901 OSF
Dam: RED BENCHMARK VIRGINIA 32'17 (1961730)
 RED BASIN EXT 45T5 AMF NHF OSF MAF
 RED BENCHMARK VIRGINIADOLL 050
 RED VIRGINIADOLL BENCHMARK 353

PERFORMANCE							EPD's				
AOD	BW	205D	365D	ADG	F:G	RFI	BW	WW	YW	RADG	RFI
2	89	563	1023	4.28	7.23:1	+7.65	+1.0	40	75	+0.20	+1.2346

SEPTEMBER 2020 EPD RANKING:		
Top 1% Ribeye	Top 10% Marbling	Top 15% Yearling Weight
Top 5% Fat	Top 10% Carcass Weight	

CARCASS	
EPD'S:	
MARB	+0.44
REA	+0.80
FAT	+0.022
CW	+35
ACTUAL:	
%IMF	4.54
REA	1.21
RIB FAT	0.22
LMY	67.4%

• Do note that Virginia Doll 050 is "Premier" as designated by the Canadian Angus Association. Take a look at Lot 58. 7'19 was sick at weaning but has come on of late. He scanned a 16.3 sq in ribeye had a LMY of 67.4%



REFERENCE SIRE

RED LIKE IT PROFIT BUILDER 7215E



GENOMIC
ENHANCED
CAA-EPDs

VALUE INDEX	HERD BUILDER 157	GRID MASTER 51
-------------	---------------------	-------------------

PERF	AOD	BW	205D	365D
	3	74	651	1156

RED LSF TAKEOVER 9943W

Sire: RED H2R PROFITBUILDER B403

RED BROWN MS P707 Y6674

RED LSF HERDBUILDER 1058Y

Dam: RED TBJR REBELLA 409

RED RAISLAND REBELLA 146-737

RED HXC CONQUEST 4405P

RED LSF WIDELOAD R5014 U8061

RED BECKTON NEBULA P P707

RED BROWN MS MISSION STMTT6963

RED BECKTON EPIC R397 K

RED LSF COVER GIRL S6076 W9037

RED SUNR WIDE FORCE 339W

RED RAISLAND REBELLA 737-504H

CE
+4

BW
-1.3

WW
+33

YW
+63

CW
+17

MARB
+0.66

REA
+0.33

FAT
+0.001

DOC
+15

• Profit Builder comes to us from Mike Tilleman, I Like It Like That Red Angus herd at Chinook, Montana and sad to say but on checking, Mr. Tilleman just passed away September 18, 2020. Mike was a defensive tackle in the NFL for 11 seasons and owned Tilleman GMC in Havre.

• Profit Builder will moderate size and is the easiest fleshing bull on the place.

• OWNED WITH "I LIKE IT LIKE THAT" RED ANGUS RANCH

• **2 SONS SELL**

• Avg. BW: 79 lbs.

• Avg. 205D: 587 lbs.

• Avg. 365D: 1238 lbs

SEPTEMBER 2020 EPD RANKING:

Top 1% Marbling
Top 10% Birth Weight
Top 6% Dry Matter Intake

RED LIKE IT PROFIT BUILDER 7215E

LOT 61

RED BENCHMARK FOR PROFIT 51'19

Male BFR 51G May 12, 2019 2105208

RED LSF TAKEOVER 9943W AMF CAF NHF OSF MAF DDF
 RED H2R PROFITBUILDER B403 AMF NHF OSF MAF
 RED BROWN MS P707 Y6674 OSF MAF
Sire: RED LIKE IT PROFIT BUILDER 7215E (2022641)
 RED LSF HERDBUILDER 1058Y OSF
 RED TBJR REBELLA 409 OSF MAF
 RED RAISLAND REBELLA 146-737

RED BROWN ALLIANCE X7795 NHF OSF MAF
 RED DUNN BETTER A500
 RED LSF SWEETNESS J1358 P4085 NHF OSF MAF
Dam: RED BENCHMARK FIREFLY 77'15 (1834151)
 RED BASIN EXT 45T5 AMF NHF OSF MAF
 RED BENCHMARK FIREFLY 65'12
 RED BENCHMARK FIREFLY 8110

CARCASS	
EPD'S:	
MARB	+0.62
REA	+0.22
FAT	+0.016
CW	+22
ACTUAL:	
%IMF	5.38
REA	1.16
RIB FAT	0.33
LMY	61.3%

LOT 62

RED BENCHMARK FOR PROFIT 57'19

Male BFR 57G May 23, 2019 2105214

RED LSF TAKEOVER 9943W AMF CAF NHF OSF MAF DDF
 RED H2R PROFITBUILDER B403 AMF NHF OSF MAF
 RED BROWN MS P707 Y6674 OSF MAF
Sire: RED LIKE IT PROFIT BUILDER 7215E (2022641)
 RED LSF HERDBUILDER 1058Y OSF
 RED TBJR REBELLA 409 OSF MAF
 RED RAISLAND REBELLA 146-737

RED 3JG-MEW GRIDIRON 806U OSF
 RED LSF MEW GAME CHANGER 1613Y OSF
 RED MEW ELIZABETH 710T OSF
Dam: RED BENCHMARK LAKIMA 70'14 (1777853)
 RED 5L TRAVLIN EXP 1892-6295 OSF MAF
 RED BENCHMARK LAKIMA 871
 RED LAZY MC LAKIMA 11F

CARCASS	
EPD'S:	
MARB	+0.47
REA	+0.59
FAT	-0.002
CW	+31
ACTUAL:	
%IMF	4.53
REA	1.26
RIB FAT	0.35
LMY	62%

PERFORMANCE							EPD's				
AOD	BW	205D	365D	ADG	F:G	RFI	BW	WW	YW	RADG	RFI
4	80	576	1232	4.52	5.49:1	+1.65	-0.1	44	76	+0.21	+0.0882

PERFORMANCE							EPD's				
AOD	BW	205D	365D	ADG	F:G	RFI	BW	WW	YW	RADG	RFI
5	77	598	1243	4.54	5.14:1	-1.01	-1.3	44	77	+0.19	+0.1102

SEPTEMBER 2020 EPD RANKING:		
Top 1% Milk	Top 10% Docility	Top 20% Weaning Weight
Top 2% Marbling	Top 15% Yearling Weight	

SEPTEMBER 2020 EPD RANKING:		
Top 5% Ribeye	Top 10% Birth Weight	Top 15% Carcass Weight
Top 8% Marbling	Top 15% Yearling Weight	Top 20% Weaning Weight

• We liked this bull enough, that he got a few cows to breed this summer. His mother is a good one with a son at Armstrong Ranches, she is from a 45T5 dam.

• From a dam that traces to our donor Lakima 11F, she designated "Elite". Note Game Changer here, he's a big growth bull with excellent end product merit. Top ribeye scan on this guy at 1.26 sq in per 100lbs, not many better.



LOT 61



LOT 62

BULL SIRED BY RED LSF MEW PLATINUM 5660

LOT 63

RED BENCHMARK PLATINUM 10'19

Male BFR 10G April 12, 2019 2105172

S A V FINAL ANSWER 0035
 RED BROWN INCREDABULL Z7277
 RED BROWN MS MISSION STMTX7559 OSF MAF
Sire: RED LSF MEW PLATINUM 5660C OSF (1947500)
 LCC NEW STANDARD AMF CAF OHF NHF OSF DDC
 RED BROWN MS NEW STANDARD7053
 RED BROWN MS DESTINATION

RED BIEBER MAKE MIMI 7249 OSF MAF
 RED BIEBER MAKIN HAY 9913 AMF CAF NHF OSF MAF DDF
 RED BIEBER ADELLE 8958 OSF
Dam: RED BENCHMARK CHETA 3'17 (1957938)
 RED LSF RAB COMMITMENT 2792Z
 RED BENCHMARK CHETA 79'15
 RED BENCHMARK CHETA 019'13

PERFORMANCE							EPD's				
AOD	BW	205D	365D	ADG	F:G	RFI	BW	WW	YW	RADG	RFI
2	70	528	1190	4.50	3.94:1	-4.59	-0.8	44	78	+0.24	-0.3968
SEPTEMBER 2020 EPD RANKING:											
Top 2% Dry Matter Index				Top 8% Residual ADG				Top 15% Maternal Calving Ease			
Top 5% Ribeye				Top 10% Fat				Top 15% Yearling Weight			
Top 8% Calving Ease											

CARCASS	
EPD'S:	
MARB	+0.98
REA	+0.44
FAT	+0.019
CW	+47
ACTUAL:	
%IMF	6.34
REA	1.02
RIB FAT	0.34
LMY	61.2%

* A special bull to conclude the sale listing. He finished first on Grow Safe with a conversion ratio of 3.94 to 1 with a residual feed index of -4.59.



LOT 63



PLATINUM 5660

HOW TO PARTICIPATE IN THIS DLMS FARM GATE TIMED AUCTION WITH EXTENDED BIDDING:

1. Visit <https://farmgatetimedauctions.ca> , click the LOGIN/REGISTRATION button. First time users will select the REGISTER button from this page. Fill out the registration form to sign up for a free user account and it allows you to select a username and password for use on all Farm Gate Timed auctions. This program will send you text and email messages whenever there is activity on your favorite lots or someone challenges your proxy bid and this is why you will be asked for both your current email and cell phone number. If you are a past participant in the Farm Gate Timed auctions simply enter your user name and pass word to continue. This takes you to a list of both current and upcoming Farm Gate Auctions.

2. You can choose your favourite lots in this sale at this time and the program will allow you to open either all sale lots or just your favorite lots on your screen. Any time there is active bidding on a lot you have identified on your favorite list you will get a text and/or an email noting this activity.

3. The program allows you to place a proxy bid on any sale lot. This in fact protects your interest in any lot of interest for you to a specified dollar value you set, when you may not be able to give 100% attention to the sale. If the lot has a \$2000 bid on it and you place a proxy bid of \$3500 into the system, the computer will bid \$2100 for you but if some one else bids \$2200, the computer will again bid for you, this time at \$2300. The system will look after your interest to a maximum of \$3500. If another bidder is on at \$3600, your proxy will no longer be effective and you will no longer have the winning bid on this lot without once again logging in and bidding again or moving your attention to a second lot of interest.

4. At Closing time of the sale the entire sale will extend bidding for 5 minute if a bid is placed on any lot in the sale. Any bid received after 7 PM will extend the sale by 5 minutes from the time of that bid. When no bidding occurs for 5 min the computer will declare the sale finished.

6. Within 24 hours of the sale close the Sale consignor will contact all winning bidders to arrange payment, transfer of pedigrees and delivery/Pick up of your lot. If you require assistance with using the new DLMS Farm Gate web site, if you don't understand how to create a favorites list, if you can't figure out the proxy bid or you just plain want to bid via phone, please talk to any of the DLMS team or Sale Consignors.

More Info:

What is Racehorse Style Close?

Racehorse style sale close is when the entire sale stays open in extended bidding. This type of sale allows you as the bidder to change to a different lot within the same sale if the bidding has gone in to extended bidding.

How will Extended Bidding works?

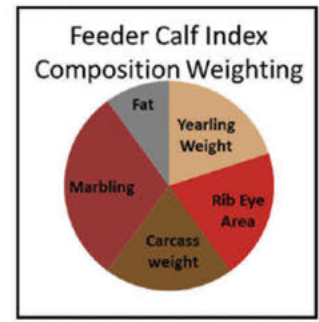
When we get to the close out end time the clock for close extends with any bid placed with less than 5 min on the clock. This type of extended bidding turns the end time to more of a soft time. Extended bidding allows bidders to compete in lots like a real auction and give all bidders the same time to make a decision. Always follow the clock to see how much time remains in the sale you are interested in.

FEEDER CALF INDEX

Feeder Calf Index is an index calculated by the Canadian Angus Association that gives one a weighted combination EPD of economically relevant traits for feeder calves. The composition weighting is as indicated below.

You can obtain these values from the Association on the bulls you are using to see how they stack up. Below is a listing of some top end producers Feeder Calf Indexes.

Ranch #1 using Benchmark® Bulls	228
Ranch #2 using Benchmark® Bulls	209
Ranch #3 using Benchmark® Bulls	196
Ranch #4 using Benchmark® Bulls	190
Ranch #5 using Benchmark® Bulls	190
Ranch #6 using non-Benchmark® top ranked bulls	189
Ranch #7 using non-Benchmark® top ranked bulls	186
Ranch #8 using non-Benchmark® top ranked bulls	181
Ranch #9 using non-Benchmark® top ranked bulls	174
Ranch #10 using non-Benchmark® top ranked bulls	112
Breed Average	105



Be sure your cattle measure up... "Use a Benchmark® Bull!"



NOTES

SALE TERMS & CONDITIONS

Terms:

The terms of the sale are cash or cheque payable at par to Benchmark Farms Ltd., Lethbridge, AB unless prior arrangements are made with the seller. The right of property shall not pass until full settlement is made. All arrangements and settlements must be made with Benchmark Farms Ltd. before any cattle will be released.

Purchaser's Risk

Each animal becomes the risk of the purchaser as soon as sold.

Certificate of Registry

A certificate of registry duly transferred will be furnished to the buyer for each animal after settlement is made.

Bids and Bidding

Sale bidding opens: November 28TH at 12 pm MST.
Sale bidding soft closes: November 30TH at 7 pm MST.
During the Racehorse Style soft close extended bidding always follow the clock of remaining time left to bid.

Breeder's Guarantee

Everything possible has been done to assure that every bull in this sale will be a breeder. Taber Cattle Clinic semen tested, and physically evaluated every bull. However, should a problem arise, please inform the seller so further arrangements may be made.

Shipping

Assistance will be given in making shipment after the sale but no risk is assumed by the seller. Expenses incurred are the responsibility of the purchaser. Purchasers are requested to furnish shipping instructions when making settlement. Any additional expenses are the responsibility of the buyer, including duty, brokerage fees, etc.

Accidents

Although every precaution will be taken to ensure the safety of visitors to the ranch, the owners do not assume any responsibility or liability, legal or otherwise, in the event of any unforeseen incidents resulting in damage or loss of property.

**BLACK AND RED ANGUS BREEDERS
YOUR CARCASS SOURCE**



**BENCHMARK FARMS LTD.
Box 997, LETHBRIDGE, AB T1J 4A2**

CANADA		POSTES
POST		CANADA
	Postage paid	Port payé
	Personalized Mail	Courrier personnalisé
	1602237	